

**KIT COMPONENTS**

- A modular FHT tube comprising 16 segments made from acetal-based technopolymer (POM), blue.
- Two FHJ threaded fittings made from acetal-based technopolymer (POM), orange.
- Four FHN nozzles made from acetal-based technopolymer (POM), orange.

**FEATURES**

The modular structure, made using snap assembly of the single segments (Fig.1), allows you to adjust and direct the lubricating jet with maximum flexibility, while maintaining stability in operation even in the presence of vibrations.

The length of the tube can be adapted to the specific application by adding or removing the appropriate number of segments via the snap fitting.

The use of PTFE tape on the threading of the fittings is recommended to facilitate sealing.

Assembled without using seals, the system should therefore not be considered watertight.

The kit's individual components are also sold separately (see table of components).

Max input pressure: 2 bar.

See Flexible coolant hoses (on page -).

**CHEMICAL COMPATIBILITY**

Material resistant to detergents, lubricants and oils, avoid contact with strong acids and bases.

To use fluids other than those listed, contact Elessa's technical department.

In any case we suggest to verify the suitability of the product under the actual working conditions.

**SPECIAL EXECUTIONS ON REQUEST**

- Tubes, fittings and nozzles made from raw materials suitable for contact with food (FDA CFR.21 and EU 10/2011).
- Kit with tubes with a diameter of 3/4".

**ACCESSORIES ON REQUEST**

Pliers to assemble the components.

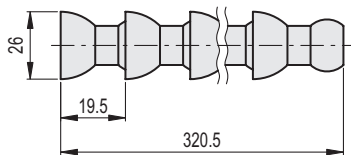


Fig.1

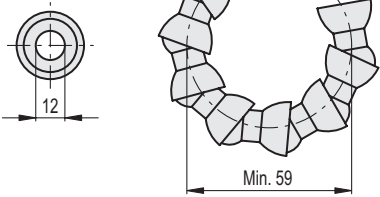


Kit components

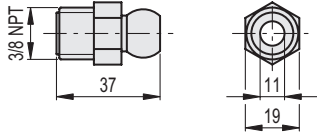
Code	Description	Components	Qty
471206	FHT.1/2	Modular tube	1
471068	FHJ.1/2-3/8-NPT	Threaded fitting	1
471069	FHJ.1/2-1/2-NPT	Threaded fitting	1
471126	FHN.1/2-B-5	Nozzle	1
471131	FHN.1/2-B-8	Nozzle	1
471136	FHN.1/2-B-11	Nozzle	1
471141	FHN.1/2-P50	Nozzle	1



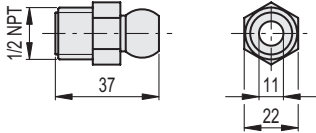
FHT.1/2



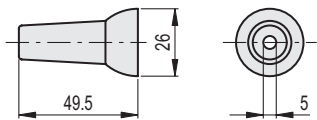
FHJ.1/2-3/8-NPT



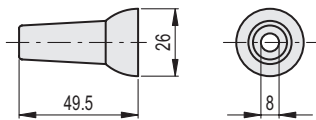
FHJ.1/2-1/2-NPT



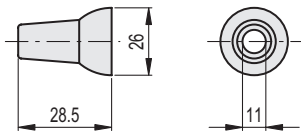
FHN.1/2-B-5



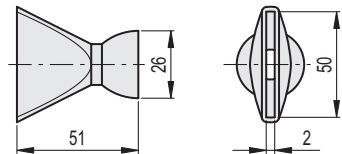
FHN.1/2-B-8



FHN.1/2-B-11



FHN.1/2-P50



METRIC

Code	Description	⚖
471006	FH.1/2	136