



- 1
- 2
- 3
- 4
- 5
- 6
- 7
- 8
- 9
- 10
- 11
- 12
- 13
- 14
- 15
- 16
- 17
- 18
- 19

STANDARD EXECUTIONS

Plain pass-through hole.

- **DVL.1:** base plate in polished zinc-plated steel, vibration-damper body in natural rubber NR, black colour, hardness 40, 55, 70 Shore A ± 5 .
- **DVL.1-SST:** base plate in INOX AISI 304 stainless steel, vibration-damper body in natural rubber NR, black colour, hardness 55 Shore A ± 5 .

FEATURES AND APPLICATIONS

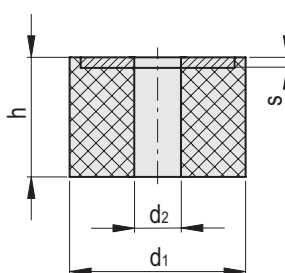
The rubber buffers have been designed to damp vibrations, shocks and noises produced by moving bodies or non-balanced vibrating masses of equipment and machines which can cause:

- malfunctioning and reduction of the machine lifespan and/or of the adjacent ones;
- damage to health;
- noise.

Load diagrams for each single code are available on request. See Technical data and guidelines for the choice (on page 728).

SPECIAL EXECUTIONS ON REQUEST

- Natural rubber NR, hardness 40, 70 tolerance ± 5 Shore A for executions with AISI 304 stainless steel base.
- Nitrile rubber NBR: for applications where high resistance to oil, fuels and other chemical substances is required.
- EPDM Rubber: for applications where high resistance to high temperature, ozone, and atmospheric agents is required. It also has excellent electrical insulation properties.



Conversion Table	
1 mm = 0.039 inch	
d1	
mm	inch
20	0.78
25	0.98
30	1.17
40	1.56
50	1.95
60	2.34
80	3.12
100	3.90

DVL.1-SST



Code	Description	d1	d2	h	s	Max load [N]	Max. deflection [mm]	Stiffness [N/mm]	Δ
436302	DVL.1-20-15-8.5-SST-55	20	8.5	15	2	338	3.75	90	6
436307	DVL.1-25-20-10.5-SST-55	25	10.5	20	2	511	5	102	13
436312	DVL.1-30-30-13.5-SST-55	30	13.5	30	2	665	7.5	89	20
436317	DVL.1-40-10-10-SST-55	40	10	10	2	2100	2.5	840	25
436322	DVL.1-40-20-13-SST-55	40	13	20	2	1580	5	316	35
436327	DVL.1-40-30-13-SST-55	40	13	30	2	1616	7.5	215	40
436332	DVL.1-50-40-17-SST-55	50	17	40	2	2304	10	23	115
436337	DVL.1-60-20-21.5-SST-55	60	21.5	20	2	4410	5	882	112
436342	DVL.1-60-30-17-SST-55	60	17	30	2	4120	7.5	549	100
436347	DVL.1-60-30-21.5-SST-55	60	21.5	30	2	4130	7.5	551	111
436352	DVL.1-60-50-21-SST-55	60	21	50	2	3570	12.5	286	112
436357	DVL.1-80-30-21-SST-55	80	21	30	3	7630	7.5	1017	176
436362	DVL.1-80-35-25-SST-55	80	25	35	3	7600	8.75	869	270
436367	DVL.1-80-40-25-SST-55	80	25	40	3	6040	10	604	270
436372	DVL.1-100-25-22-SST-55	100	22	25	3	13900	6.25	2224	405
436377	DVL.1-100-40-21-SST-55	100	21	40	3	13360	10	1336	503

Vibration damping elements

DVL.1

METRIC

Code	Description	d1	d2	h	s	Max load [N]	Max. deflection [mm]	Stiffness [N/mm]	⚖
436201	DVL.1-20-15-8.5-40	20	8.5	15	2	202	3.75	54	6
436202	DVL.1-20-15-8.5-55	20	8.5	15	2	338	3.75	90	6
436203	DVL.1-20-15-8.5-70	20	8.5	15	2	643	3.75	171	6
436206	DVL.1-25-20-10.5-40	25	10.5	20	2	300	5	60	13
436207	DVL.1-25-20-10.5-55	25	10.5	20	2	511	5	102	13
436208	DVL.1-25-20-10.5-70	25	10.5	20	2	908	5	182	13
436211	DVL.1-30-30-13.5-40	30	13.5	30	2	407	7.5	54	20
436212	DVL.1-30-30-13.5-55	30	13.5	30	2	665	7.5	89	20
436213	DVL.1-30-30-13.5-70	30	13.5	30	2	1387	7.5	185	20
436216	DVL.1-40-10-10-40	40	10	10	2	1134	2.5	454	25
436217	DVL.1-40-10-10-55	40	10	10	2	2100	2.5	840	25
436218	DVL.1-40-10-10-70	40	10	10	2	4090	2.5	1636	25
436221	DVL.1-40-20-13-40	40	13	20	2	983	5	197	35
436222	DVL.1-40-20-13-55	40	13	20	2	1580	5	316	35
436223	DVL.1-40-20-13-70	40	13	20	2	3700	5	740	35
436226	DVL.1-40-30-13-40	40	13	30	2	889	7.5	119	40
436227	DVL.1-40-30-13-55	40	13	30	2	1616	7.5	215	40
436228	DVL.1-40-30-13-70	40	13	30	2	2820	7.5	376	40
436231	DVL.1-50-40-17-40	50	17	40	2	1392	10	139	115
436232	DVL.1-50-40-17-55	50	17	40	2	2304	10	230	115
436233	DVL.1-50-40-17-70	50	17	40	2	4860	10	486	115
436236	DVL.1-60-20-21.5-40	60	21.5	20	2	2840	5	568	112
436237	DVL.1-60-20-21.5-55	60	21.5	20	2	4410	5	882	112
436238	DVL.1-60-20-21.5-70	60	21.5	20	2	8100	5	1620	112
436241	DVL.1-60-30-17-40	60	17	30	2	2362	7.5	315	100
436242	DVL.1-60-30-17-55	60	17	30	2	4120	7.5	549	100
436243	DVL.1-60-30-17-70	60	17	30	2	7570	7.5	1009	100
436246	DVL.1-60-30-21.5-40	60	21.5	30	2	2239	7.5	299	111
436247	DVL.1-60-30-21.5-55	60	21.5	30	2	4130	7.5	551	111
436248	DVL.1-60-30-21.5-70	60	21.5	30	2	7990	7.5	1065	111
436251	DVL.1-60-50-21-40	60	21	50	2	3060	12.5	245	112
436252	DVL.1-60-50-21-55	60	21	50	2	3570	12.5	286	112
436253	DVL.1-60-50-21-70	60	21	50	2	7391	12.5	591	112
436256	DVL.1-80-30-21-40	80	21	30	3	4990	7.5	665	176
436257	DVL.1-80-30-21-55	80	21	30	3	7630	7.5	1017	176
436258	DVL.1-80-30-21-70	80	21	30	3	13180	7.5	1757	176
436261	DVL.1-80-35-25-40	80	25	35	3	4370	8.75	499	270
436262	DVL.1-80-35-25-55	80	25	35	3	7600	8.75	869	270
436263	DVL.1-80-35-25-70	80	25	35	3	11970	8.75	1368	270
436266	DVL.1-80-40-25-40	80	25	40	3	8700	10	870	270
436267	DVL.1-80-40-25-55	80	25	40	3	6040	10	604	270
436268	DVL.1-80-40-25-70	80	25	40	3	11030	10	1103	270
436271	DVL.1-100-25-22-40	100	22	25	3	9680	6.25	1549	405
436272	DVL.1-100-25-22-55	100	22	25	3	13900	6.25	2224	405
436273	DVL.1-100-25-22-70	100	22	25	3	14690	6.25	2350	405
436276	DVL.1-100-40-21-40	100	21	40	3	8610	10	861	503
436277	DVL.1-100-40-21-55	100	21	40	3	13360	10	1336	503
436278	DVL.1-100-40-21-70	100	21	40	3	25530	10	2553	503

