

STANDARD COMPONENTS

- **DCE-S**: DIN 3015-1 standard series tube clamp in polypropylene-based technopolymer (PP), high UV resistance, RAL 9005 black colour.
- **DCE-PU**: zinc-plated cover plate.
- **DCE-PL**: welded lower plate in phosphated steel.
- **DCE-SRC**: cylinder head screw with hexagon socket in zinc-plated steel.
- **DCE-SRE**: hexagon head screw in zinc-plated steel.
- **DCE-WA**: flat washer in zinc-plated steel.
- **DCE-GU**: zinc-plated steel mounting guide.
- **DCE-NTG**: nut for zinc-plated steel mounting guide.



FEATURES AND APPLICATIONS

The different KIT configurations obtainable from the DCE-S collar body allow the locking of rigid tubes or flexible cables in a safe manner, reducing vibrations and noise.

The DIN 3015-1 standard defines the technical, dimensional and material requirements for the creation of a fastening system suitable for multiple applications.

In particular, the DIN regulation defines specific reference groups based on the overall dimensions of the collar bodies.

The table shows the correspondence between the DIN 3015-1 groups and the corresponding DCE-S groups.

The special internal knurling of the two half-clamps enables a high level of grip between the clamp and the tube, thus ensuring high stability.

They are used both in industrial hydraulics as a fastening system for the construction of rigid pipes (liquids or gases) and in mobile hydraulics (material handling machines, agricultural vehicles) for the construction of hydraulic or pneumatic systems.

Assembly of the clamp kit starts from the bottom; the DCE-PL welding plate represents the base where the bottom half-collar rests, then the pipe (or hose) is inserted and the top half-collar is overlapped. If a fixed solution is not necessary, it is possible to use DCE-NTG fixing nuts instead of the plate. These make it possible, if positioned on the DCE-GU guide, to move the kit along the guide to adjust its position during the positioning phase.

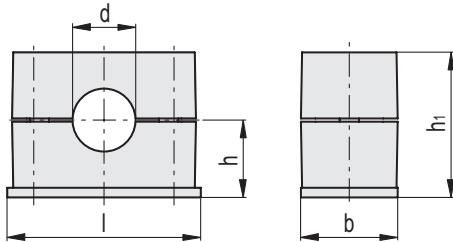
To tighten the collar, it is possible to use the DCE-PU cover plate together with the DCE-SRE hexagon head screws or, if the top plate is not necessary, it is recommended to use the DCE-SRC cylinder head screws with hexagonal socket and the DCE-WA washer.

Tube clamps technical data.

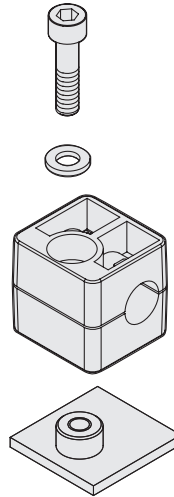
STANDARD COMPONENTS TABLE

DCK-S		1		6		SRC		WA		PL		PP		C9	
		①		②		③		④		⑤					
DIN 3015-1 group	0	1	2	3	4	5	6	③ Screw		SRC*		Cylinder head screw with hexagon socket, zinc-plated steel.			
① Group DCE-S	1	2	3	4	5	6	7			SRE*		Hexagon head screw, zinc-plated steel			
② Diameter of the tube	6	6	12.7	19	26.9	32	48.3	④ Top part		WA		Flat washer, zinc-plated steel			
	8	6.4	14	20	28	33.7	50			PU		Top plate, zinc-plated steel			
	10	8	15	21.3	30	35	50.8	⑤ Bottom part		PL		Bottom plate to be welded, phosphated steel			
	12	9.5	16	22	32	38	54			NTG		Nut for mounting guide, zinc-plated steel			
		10	17.2	25		40									
		12	18	25.4		42.4									
		12.7				45									

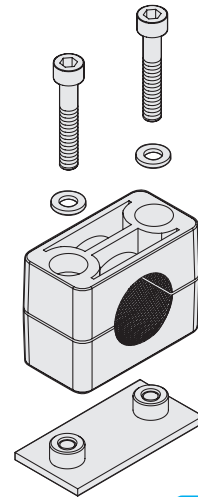
*SRE-WA and SRC-PU configurations are not compatible



DCK-S-1-SRC-WA-PL
(Group 1)



DCK-S*-SRC-WA-PL
(*Group 2÷7)

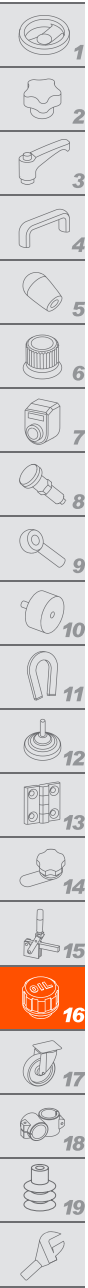


METRIC

Code	Description	Group	b	d	d Tube [GAS]	l	h	h1	⚖
571001-C9	DCK-S-1-6-SRC-WA-PL-PP-C9	1	30	6	-	31.5	16.5	31.6	45
571003-C9	DCK-S-1-8-SRC-WA-PL-PP-C9	1	30	8	5/16	31.5	16.5	31.6	45
571005-C9	DCK-S-1-10-SRC-WA-PL-PP-C9	1	30	10	-	31.5	16.5	31.6	44
571007-C9	DCK-S-1-12-SRC-WA-PL-PP-C9	1	30	12	-	31.5	16.5	31.6	43
571011-C9	DCK-S-2-6-SRC-WA-PL-PP-C9	2	30	6	-	34.5	16.5	31.6	62
571013-C9	DCK-S-2-6.4-SRC-WA-PL-PP-C9	2	30	6.4	1/4	34.5	16.5	31.6	62
571015-C9	DCK-S-2-8-SRC-WA-PL-PP-C9	2	30	8	5/16	34.5	16.5	31.6	61
571017-C9	DCK-S-2-9.5-SRC-WA-PL-PP-C9	2	30	9.5	3/8	34.5	16.5	31.6	61
571019-C9	DCK-S-2-10-SRC-WA-PL-PP-C9	2	30	10	-	34.5	16.5	31.6	61
571021-C9	DCK-S-2-12-SRC-WA-PL-PP-C9	2	30	12	-	34.5	16.5	31.6	60
571023-C9	DCK-S-2-12.7-SRC-WA-PL-PP-C9	2	30	12.7	1/2	34.5	16.5	31.6	60
571031-C9	DCK-S-3-12.7-SRC-WA-PL-PP-C9	3	30	12.7	1/2	40.5	19.5	37.6	75
571033-C9	DCK-S-3-14-SRC-WA-PL-PP-C9	3	30	14	-	40.5	19.5	37.6	71
571035-C9	DCK-S-3-15-SRC-WA-PL-PP-C9	3	30	15	-	40.5	19.5	37.6	71
571037-C9	DCK-S-3-16-SRC-WA-PL-PP-C9	3	30	16	5/8	40.5	19.5	37.6	70
571039-C9	DCK-S-3-17.2-SRC-WA-PL-PP-C9	3	30	17.2	-	40.5	19.5	37.6	70
571041-C9	DCK-S-3-18-SRC-WA-PL-PP-C9	3	30	18	-	40.5	19.5	37.6	69
571051-C9	DCK-S-4-19-SRC-WA-PL-PP-C9	4	30	19	3/4	48	21	40.6	88
571053-C9	DCK-S-4-20-SRC-WA-PL-PP-C9	4	30	20	-	48	21	40.6	87
571055-C9	DCK-S-4-21.3-SRC-WA-PL-PP-C9	4	30	21.3	-	48	21	40.6	86
571057-C9	DCK-S-4-22-SRC-WA-PL-PP-C9	4	30	22	7/8	48	21	40.6	86
571059-C9	DCK-S-4-25-SRC-WA-PL-PP-C9	4	30	25	-	48	21	40.6	83
571061-C9	DCK-S-4-25.4-SRC-WA-PL-PP-C9	4	30	25.4	1	48	21	40.6	82
571071-C9	DCK-S-5-26.9-SRC-WA-PL-PP-C9	5	30	26.9	-	56.5	24	46.6	101
571073-C9	DCK-S-5-28-SRC-WA-PL-PP-C9	5	30	28	-	56.5	24	46.6	100
571075-C9	DCK-S-5-30-SRC-WA-PL-PP-C9	5	30	30	-	56.5	24	46.6	98
571077-C9	DCK-S-5-32-SRC-WA-PL-PP-C9	5	30	32	1 1/4	56.5	24	46.6	96
571081-C9	DCK-S-6-32-SRC-WA-PL-PP-C9	6	30	32	1 1/4	69.5	32	62.6	113
571083-C9	DCK-S-6-33.7-SRC-WA-PL-PP-C9	6	30	33.7	-	69.5	32	62.6	111
571085-C9	DCK-S-6-35-SRC-WA-PL-PP-C9	6	30	35	-	69.5	32	62.6	108
571087-C9	DCK-S-6-38-SRC-WA-PL-PP-C9	6	30	38	1 1/2	69.5	32	62.6	105
571089-C9	DCK-S-6-40-SRC-WA-PL-PP-C9	6	30	40	-	69.5	32	62.6	101
571091-C9	DCK-S-6-42.4-SRC-WA-PL-PP-C9	6	30	42.4	-	69.5	32	62.6	99
571093-C9	DCK-S-6-45-SRC-WA-PL-PP-C9	6	30	45	-	69.5	32	62.6	93
571101-C9	DCK-S-7-48.3-SRC-WA-PL-PP-C9	7	30	48.3	-	85.5	36	70.6	173
571103-C9	DCK-S-7-50-SRC-WA-PL-PP-C9	7	30	50	-	85.5	36	70.6	167
571105-C9	DCK-S-7-50.8-SRC-WA-PL-PP-C9	7	30	50.8	2	85.5	36	70.6	166
571107-C9	DCK-S-7-54-SRC-WA-PL-PP-C9	7	30	54	-	85.5	36	70.6	161

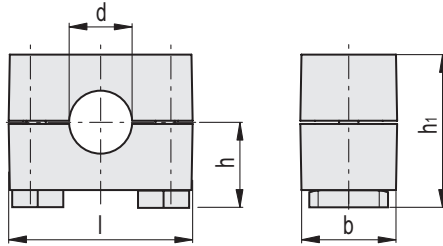


Accessories for hydraulic systems

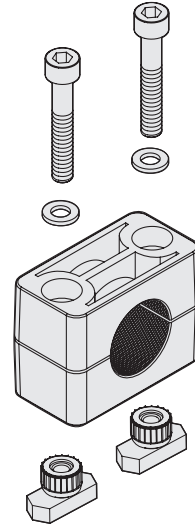


Accessories for hydraulic systems

3

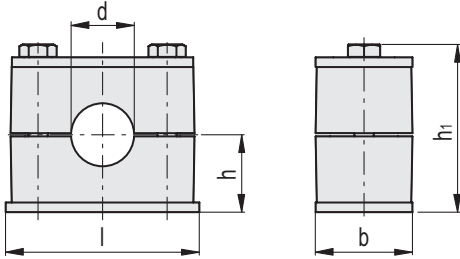


DCK-S*-SRC-WA-NTG
(*Group 2÷7)

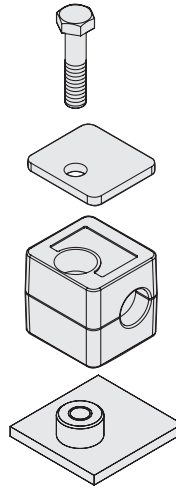


METRIC

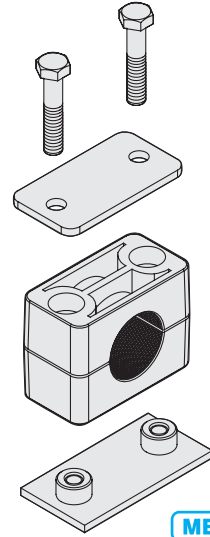
Code	Description	Group	b	d	d Tube [GAS]	l	h	h1	
571111-C9	DCK-S-2-6-SRC-WA-NTG-PP-C9	2	30	6	-	37	19	34.1	54
571113-C9	DCK-S-2-6.4-SRC-WA-NTG-PP-C9	2	30	6.4	1/4	37	19	34.1	53
571115-C9	DCK-S-2-8-SRC-WA-NTG-PP-C9	2	30	8	5/16	37	19	34.1	53
571117-C9	DCK-S-2-9.5-SRC-WA-NTG-PP-C9	2	30	9.5	3/8	37	19	34.1	52
571119-C9	DCK-S-2-10-SRC-WA-NTG-PP-C9	2	30	10	-	37	19	34.1	52
571121-C9	DCK-S-2-12-SRC-WA-NTG-PP-C9	2	30	12	-	37	19	34.1	51
571123-C9	DCK-S-2-12.7-SRC-WA-NTG-PP-C9	2	30	12.7	1/2	37	19	34.1	51
571131-C9	DCK-S-3-12.7-SRC-WA-NTG-PP-C9	3	30	12.7	1/2	42	22	40.1	63
571133-C9	DCK-S-3-14-SRC-WA-NTG-PP-C9	3	30	14	-	42	22	40.1	59
571135-C9	DCK-S-3-15-SRC-WA-NTG-PP-C9	3	30	15	-	42	22	40.1	58
571137-C9	DCK-S-3-16-SRC-WA-NTG-PP-C9	3	30	16	5/8	42	22	40.1	57
571139-C9	DCK-S-3-17.2-SRC-WA-NTG-PP-C9	3	30	17.2	-	42	22	40.1	57
571141-C9	DCK-S-3-18-SRC-WA-NTG-PP-C9	3	30	18	-	42	22	40.1	56
571151-C9	DCK-S-4-19-SRC-WA-NTG-PP-C9	4	30	19	3/4	50	23.5	43.1	69
571153-C9	DCK-S-4-20-SRC-WA-NTG-PP-C9	4	30	20	-	50	23.5	43.1	69
571155-C9	DCK-S-4-21.3-SRC-WA-NTG-PP-C9	4	30	21.3	-	50	23.5	43.1	67
571157-C9	DCK-S-4-22-SRC-WA-NTG-PP-C9	4	30	22	7/8	50	23.5	43.1	67
571159-C9	DCK-S-4-25-SRC-WA-NTG-PP-C9	4	30	25	-	50	23.5	43.1	64
571161-C9	DCK-S-4-25.4-SRC-WA-NTG-PP-C9	4	30	25.4	1	50	23.5	43.1	64
571171-C9	DCK-S-5-26.9-SRC-WA-NTG-PP-C9	5	30	26.9	-	57	26.5	49.1	76
571173-C9	DCK-S-5-28-SRC-WA-NTG-PP-C9	5	30	28	-	57	26.5	49.1	75
571175-C9	DCK-S-5-30-SRC-WA-NTG-PP-C9	5	30	30	-	57	26.5	49.1	72
571177-C9	DCK-S-5-32-SRC-WA-NTG-PP-C9	5	30	32	1 1/4	57	26.5	49.1	71
571181-C9	DCK-S-6-32-SRC-WA-NTG-PP-C9	6	30	32	1 1/4	71	34.5	65.1	111
571183-C9	DCK-S-6-33.7-SRC-WA-NTG-PP-C9	6	30	33.7	-	71	34.5	65.1	109
571185-C9	DCK-S-6-35-SRC-WA-NTG-PP-C9	6	30	35	-	71	34.5	65.1	105
571187-C9	DCK-S-6-38-SRC-WA-NTG-PP-C9	6	30	38	1 1/2	71	34.5	65.1	103
571189-C9	DCK-S-6-40-SRC-WA-NTG-PP-C9	6	30	40	-	71	34.5	65.1	99
571191-C9	DCK-S-6-42.4-SRC-WA-NTG-PP-C9	6	30	42.4	-	71	34.5	65.1	97
571193-C9	DCK-S-6-45-SRC-WA-NTG-PP-C9	6	30	45	-	71	34.5	65.1	91
571201-C9	DCK-S-7-48.3-SRC-WA-NTG-PP-C9	7	30	48.3	-	86	38.5	73.1	126
571203-C9	DCK-S-7-50-SRC-WA-NTG-PP-C9	7	30	50	-	86	38.5	73.1	120
571205-C9	DCK-S-7-50.8-SRC-WA-NTG-PP-C9	7	30	50.8	2	86	38.5	73.1	119
571207-C9	DCK-S-7-54-SRC-WA-NTG-PP-C9	7	30	54	-	86	38.5	73.1	114



DCK-S-1-SRE-PU-PL
(Group 1)



DCK-S-*SRE-PU-PL
(*Group 2÷7)

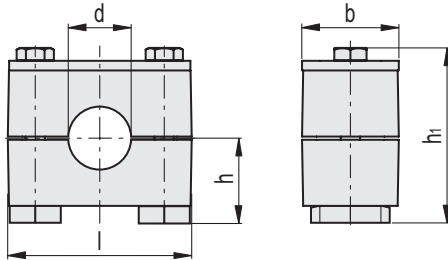
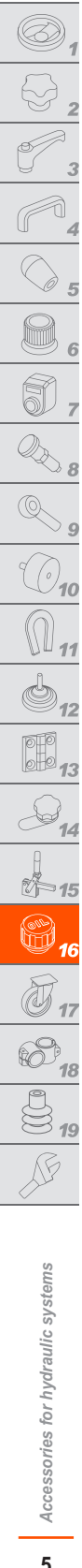


METRIC

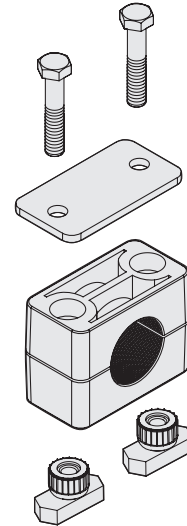
Code	Description	Group	b	d	d Tube [GAS]	l	h	h1	⚖
571211-C9	DCK-S-1-6-SRE-PU-PL-PP-C9	1	30	6	-	31.5	16.5	37	65
571213-C9	DCK-S-1-8-SRE-PU-PL-PP-C9	1	30	8	5/16	31.5	16.5	37	64
571215-C9	DCK-S-1-10-SRE-PU-PL-PP-C9	1	30	10	-	31.5	16.5	37	63
571217-C9	DCK-S-1-12-SRE-PU-PL-PP-C9	1	30	12	-	31.5	16.5	37	63
571221-C9	DCK-S-2-6-SRE-PU-PL-PP-C9	2	30	6	-	36	16.5	37	88
571223-C9	DCK-S-2-6.4-SRE-PU-PL-PP-C9	2	30	6.4	1/4	36	16.5	37	87
571225-C9	DCK-S-2-8-SRE-PU-PL-PP-C9	2	30	8	5/16	36	16.5	37	87
571227-C9	DCK-S-2-9.5-SRE-PU-PL-PP-C9	2	30	9.5	3/8	36	16.5	37	86
571229-C9	DCK-S-2-10-SRE-PU-PL-PP-C9	2	30	10	-	36	16.5	37	86
571231-C9	DCK-S-2-12-SRE-PU-PL-PP-C9	2	30	12	-	36	16.5	37	85
571233-C9	DCK-S-2-12.7-SRE-PU-PL-PP-C9	2	30	12.7	1/2	36	16.5	37	85
571241-C9	DCK-S-3-12.7-SRE-PU-PL-PP-C9	3	30	12.7	1/2	42	19.5	43	106
571243-C9	DCK-S-3-14-SRE-PU-PL-PP-C9	3	30	14	-	42	19.5	43	102
571245-C9	DCK-S-3-15-SRE-PU-PL-PP-C9	3	30	15	-	42	19.5	43	102
571247-C9	DCK-S-3-16-SRE-PU-PL-PP-C9	3	30	16	5/8	42	19.5	43	101
571249-C9	DCK-S-3-17.2-SRE-PU-PL-PP-C9	3	30	17.2	-	42	19.5	43	100
571251-C9	DCK-S-3-18-SRE-PU-PL-PP-C9	3	30	18	-	42	19.5	43	100
571261-C9	DCK-S-4-19-SRE-PU-PL-PP-C9	4	30	19	3/4	50	21	46	124
571263-C9	DCK-S-4-20-SRE-PU-PL-PP-C9	4	30	20	-	50	21	46	123
571265-C9	DCK-S-4-21.3-SRE-PU-PL-PP-C9	4	30	21.3	-	50	21	46	122
571267-C9	DCK-S-4-22-SRE-PU-PL-PP-C9	4	30	22	7/8	50	21	46	122
571269-C9	DCK-S-4-25-SRE-PU-PL-PP-C9	4	30	25	-	50	21	46	119
571271-C9	DCK-S-4-25.4-SRE-PU-PL-PP-C9	4	30	25.4	1	50	21	46	118
571281-C9	DCK-S-5-26.9-SRE-PU-PL-PP-C9	5	30	26.9	-	60	24	52	142
571283-C9	DCK-S-5-28-SRE-PU-PL-PP-C9	5	30	28	-	60	24	52	141
571285-C9	DCK-S-5-30-SRE-PU-PL-PP-C9	5	30	30	-	60	24	52	139
571287-C9	DCK-S-5-32-SRE-PU-PL-PP-C9	5	30	32	1 1/4	60	24	52	137
571291-C9	DCK-S-6-32-SRE-PU-PL-PP-C9	6	30	32	1 1/4	71	32	68	162
571293-C9	DCK-S-6-33.7-SRE-PU-PL-PP-C9	6	30	33.7	-	71	32	68	160
571295-C9	DCK-S-6-35-SRE-PU-PL-PP-C9	6	30	35	-	71	32	68	156
571297-C9	DCK-S-6-38-SRE-PU-PL-PP-C9	6	30	38	1 1/2	71	32	68	153
571299-C9	DCK-S-6-40-SRE-PU-PL-PP-C9	6	30	40	-	71	32	68	150
571301-C9	DCK-S-6-42.4-SRE-PU-PL-PP-C9	6	30	42.4	-	71	32	68	148
571303-C9	DCK-S-6-45-SRE-PU-PL-PP-C9	6	30	45	-	71	32	68	142
571311-C9	DCK-S-7-48.3-SRE-PU-PL-PP-C9	7	30	48.3	-	88	36	76	234
571313-C9	DCK-S-7-50-SRE-PU-PL-PP-C9	7	30	50	-	88	36	76	229
571315-C9	DCK-S-7-50.8-SRE-PU-PL-PP-C9	7	30	50.8	2	88	36	76	227
571317-C9	DCK-S-7-54-SRE-PU-PL-PP-C9	7	30	54	-	88	36	76	222



Accessories for hydraulic systems



DCK-S-*SRE-PU-NTG
(*Group 2÷7)



METRIC

Code	Description	Group	b	d	d Tube [GAS]	l	h	h1	⚖
571321-C9	DCK-S-2-6-SRE-PU-NTG-PP-C9	2	30	6	-	37	19	39.5	79
571323-C9	DCK-S-2-6.4-SRE-PU-NTG-PP-C9	2	30	6.4	1/4	37	19	39.5	78
571325-C9	DCK-S-2-8-SRE-PU-NTG-PP-C9	2	30	8	5/16	37	19	39.5	78
571327-C9	DCK-S-2-9.5-SRE-PU-NTG-PP-C9	2	30	9.5	3/8	37	19	39.5	78
571329-C9	DCK-S-2-10-SRE-PU-NTG-PP-C9	2	30	10	-	37	19	39.5	77
571331-C9	DCK-S-2-12-SRE-PU-NTG-PP-C9	2	30	12	-	37	19	39.5	76
571333-C9	DCK-S-2-12.7-SRE-PU-NTG-PP-C9	2	30	12.7	1/2	37	19	39.5	76
571341-C9	DCK-S-3-12.7-SRE-PU-NTG-PP-C9	3	30	12.7	1/2	42	22	45.5	82
571343-C9	DCK-S-3-14-SRE-PU-NTG-PP-C9	3	30	14	-	42	22	45.5	78
571345-C9	DCK-S-3-15-SRE-PU-NTG-PP-C9	3	30	15	-	42	22	45.5	77
571347-C9	DCK-S-3-16-SRE-PU-NTG-PP-C9	3	30	16	5/8	42	22	45.5	77
571349-C9	DCK-S-3-17.2-SRE-PU-NTG-PP-C9	3	30	17.2	-	42	22	45.5	76
571351-C9	DCK-S-3-18-SRE-PU-NTG-PP-C9	3	30	18	-	42	22	45.5	76
571361-C9	DCK-S-4-19-SRE-PU-NTG-PP-C9	4	30	19	3/4	50	23.5	48.5	94
571363-C9	DCK-S-4-20-SRE-PU-NTG-PP-C9	4	30	20	-	50	23.5	48.5	93
571365-C9	DCK-S-4-21.3-SRE-PU-NTG-PP-C9	4	30	21.3	-	50	23.5	48.5	92
571367-C9	DCK-S-4-22-SRE-PU-NTG-PP-C9	4	30	22	7/8	50	23.5	48.5	92
571369-C9	DCK-S-4-25-SRE-PU-NTG-PP-C9	4	30	25	-	50	23.5	48.5	89
571371-C9	DCK-S-4-25.4-SRE-PU-NTG-PP-C9	4	30	25.4	1	50	23.5	48.5	88
571381-C9	DCK-S-5-26.9-SRE-PU-NTG-PP-C9	5	30	26.9	-	57	26.5	54.5	105
571383-C9	DCK-S-5-28-SRE-PU-NTG-PP-C9	5	30	28	-	57	26.5	54.5	104
571385-C9	DCK-S-5-30-SRE-PU-NTG-PP-C9	5	30	30	-	57	26.5	54.5	101
571387-C9	DCK-S-5-32-SRE-PU-NTG-PP-C9	5	30	32	1 1/4	57	26.5	54.5	100
571391-C9	DCK-S-6-32-SRE-PU-NTG-PP-C9	6	30	32	1 1/4	71	34.5	70.5	148
571393-C9	DCK-S-6-33.7-SRE-PU-NTG-PP-C9	6	30	33.7	-	71	34.5	70.5	146
571395-C9	DCK-S-6-35-SRE-PU-NTG-PP-C9	6	30	35	-	71	34.5	70.5	143
571397-C9	DCK-S-6-38-SRE-PU-NTG-PP-C9	6	30	38	1 1/2	71	34.5	70.5	140
571399-C9	DCK-S-6-40-SRE-PU-NTG-PP-C9	6	30	40	-	71	34.5	70.5	136
571401-C9	DCK-S-6-42.4-SRE-PU-NTG-PP-C9	6	30	42.4	-	71	34.5	70.5	134
571403-C9	DCK-S-6-45-SRE-PU-NTG-PP-C9	6	30	45	-	71	34.5	70.5	128
571411-C9	DCK-S-7-48.3-SRE-PU-NTG-PP-C9	7	30	48.3	-	86	38.5	78.5	176
571413-C9	DCK-S-7-50-SRE-PU-NTG-PP-C9	7	30	50	-	86	38.5	78.5	170
571415-C9	DCK-S-7-50.8-SRE-PU-NTG-PP-C9	7	30	50.8	2	86	38.5	78.5	169
571417-C9	DCK-S-7-54-SRE-PU-NTG-PP-C9	7	30	54	-	86	38.5	78.5	164

Accessories for hydraulic systems