



1

MATERIAL

Zinc-plated steel, class 8.



2

STANDARD EXECUTIONS

- **DCE-WA-S**: for DCE-S (DIN 3015-1) standard series tube clamps.
- **DCE-WA-D**: for DCE-D (DIN 3015-3) double series tube clamps.



3

FEATURES AND APPLICATIONS

They are mainly used in combination with DCE-SRC and DCE-SRE screws for fastening half clamps.



4



5



6



7



8



9



10



11



12



13



14



15



16



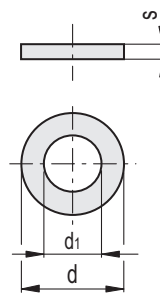
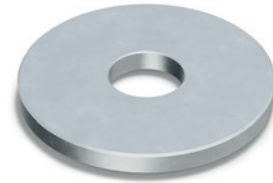
17



18



19



METRIC

DCE-WA-S

Code	Description	d	d1	s	Fastening with screws	△
570201	DCE-WA-S-6.3-0.8-ZN	11	6.4	1.6	M 6	1

DCE-WA-D

Code	Description	d	d1	s	Fastening with screws	△
570203	DCE-WA-D-6.5-2-ZN	22	6.5	2	M 6	6
570205	DCE-WA-D-8.5-2-ZN	22	8.5	2	M 8	6