

- 1
- 2
- 3
- 4
- 5
- 6
- 7
- 8
- 9
- 10
- 11
- 12
- 13
- 14
- 15
- 16
- 17
- 18
- 19

MATERIAL

Polypropylene-based (PP) technopolymer, high UV resistance, RAL 9005 black colour.

STANDARD EXECUTIONS

Fastening holes for cylindrical-head or hexagon-head screws.
 - **DCE-S-1**: with one hole.
 - **DCE-S-2-3-4-5-6-7**: with two holes.

WORKING TEMPERATURE

from -30 °C to +90 °C.

FEATURES AND APPLICATIONS

The standard series tube clamp, designed according to DIN 3015-1, provides secure fastening for rigid tubes or flexible cables, effectively minimising vibrations and noise.

The special internal knurling of the two half clamps enables a high level of grip between the clamp and the tube, thus ensuring high stability. They are used both in industrial hydraulics as a fastening system for the construction of rigid pipes (liquids or gases) and in mobile hydraulics (earth-moving machinery, agricultural vehicles) for the construction of hydraulic or pneumatic systems with flexible tubes or cables.

They are also used in the rail and naval sectors.

Tube clamps technical data.

EXECUTIONS ON REQUEST

- Clamps for tubes with different diameters.
 - Various materials and colours.

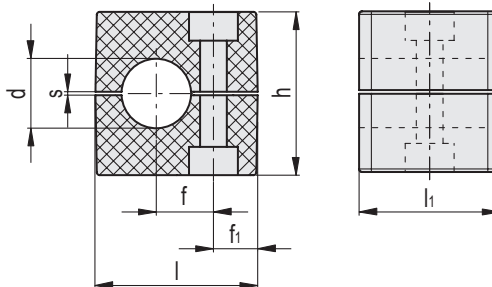
ACCESSORIES

For the assembly kit DCK-S.

- DCE-PU: top plate.
- DCE-PL: welded lower plate.
- DCE-SRC: cylindrical-head screw with hexagon socket.
- DCE-SRE: hexagonal-head screw.
- DCE-WA: flat washer.
- DCE-GU: mounting guide.
- DCE-NTG: nut for mounting guide.



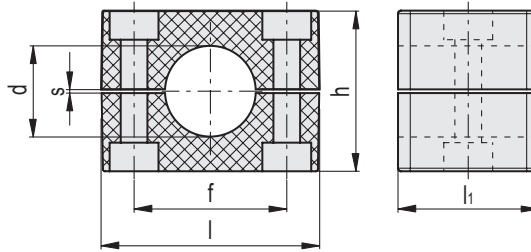
DCE-S-1



DCE-S-1

Code	Description	Group	d	d Tube [GAS]	f	f1	l	l1	h	s	Fastening with screws Metric	Fastening with screws UNC	ΔΔ
570001-C9	DCE-S-1-6-PP-C9	1	6	-	10	9.5	28	30	27	0.6	M 6	1/4-20	7
570003-C9	DCE-S-1-8-PP-C9	1	8	5/16	10	9.5	28	30	27	0.6	M 6	1/4-20	7
570005-C9	DCE-S-1-10-PP-C9	1	10	-	10	9.5	28	30	27	0.6	M 6	1/4-20	6
570007-C9	DCE-S-1-12-PP-C9	1	12	-	10	9.5	28	30	27	0.6	M 6	1/4-20	6

DCE-S-2-3-4-5-6-7



METRIC

DCE-S-2-3-4-5-6-7

Code	Description	Group	d	d Tube [GAS]	f	l	l1	h	s	Fastening with screws Metric	Fastening with screws UNC	⚖
570011-C9	DCE-S-2-6-PP-C9	2	6	-	20	37	30	27	0.6	M 6	1/4-20	9
570013-C9	DCE-S-2-6.4-PP-C9	2	6.4	1/4	20	37	30	27	0.6	M 6	1/4-20	9
570015-C9	DCE-S-2-8-PP-C9	2	8	5/16	20	37	30	27	0.6	M 6	1/4-20	9
570017-C9	DCE-S-2-9.5-PP-C9	2	9.5	3/8	20	37	30	27	0.6	M 6	1/4-20	8
570019-C9	DCE-S-2-10-PP-C9	2	10	-	20	37	30	27	0.6	M 6	1/4-20	8
570021-C9	DCE-S-2-12-PP-C9	2	12	-	20	37	30	27	0.6	M 6	1/4-20	8
570023-C9	DCE-S-2-12.7-PP-C9	2	12.7	1/2	20	37	30	27	0.6	M 6	1/4-20	8
570026-C9	DCE-S-3-12.7-PP-C9	3	12.7	1/2	26	42	30	33	0.8	M 6	1/4-20	13
570027-C9	DCE-S-3-14-PP-C9	3	14	-	26	42	30	33	0.8	M 6	1/4-20	11
570028-C9	DCE-S-3-15-PP-C9	3	15	-	26	42	30	33	0.8	M 6	1/4-20	11
570029-C9	DCE-S-3-16-PP-C9	3	16	5/8	26	42	30	33	0.8	M 6	1/4-20	10
570030-C9	DCE-S-3-17.2-PP-C9	3	17.2	-	26	42	30	33	0.8	M 6	1/4-20	10
570031-C9	DCE-S-3-18-PP-C9	3	18	-	26	42	30	33	0.8	M 6	1/4-20	10
570041-C9	DCE-S-4-19-PP-C9	4	19	3/4	33	50	30	36	0.8	M 6	1/4-20	15
570043-C9	DCE-S-4-20-PP-C9	4	20	-	33	50	30	36	0.8	M 6	1/4-20	15
570045-C9	DCE-S-4-21.3-PP-C9	4	21.3	-	33	50	30	36	0.8	M 6	1/4-20	14
570047-C9	DCE-S-4-22-PP-C9	4	22	7/8	33	50	30	36	0.8	M 6	1/4-20	14
570049-C9	DCE-S-4-25-PP-C9	4	25	-	33	50	30	36	0.8	M 6	1/4-20	13
570051-C9	DCE-S-4-25.4-PP-C9	4	25.4	1	33	50	30	36	0.8	M 6	1/4-20	12
570061-C9	DCE-S-5-26.9-PP-C9	5	26.9	-	40	57	30	42	1	M 6	1/4-20	17
570063-C9	DCE-S-5-28-PP-C9	5	28	-	40	57	30	42	1	M 6	1/4-20	16
570065-C9	DCE-S-5-30-PP-C9	5	30	-	40	57	30	42	1	M 6	1/4-20	15
570067-C9	DCE-S-5-32-PP-C9	5	32	1 1/4	40	57	30	42	1	M 6	1/4-20	15
570071-C9	DCE-S-6-32-PP-C9	6	32	1 1/4	52	71	30	58	1.4	M 6	1/4-20	32
570073-C9	DCE-S-6-33.7-PP-C9	6	33.7	-	52	71	30	58	1.4	M 6	1/4-20	31
570075-C9	DCE-S-6-35-PP-C9	6	35	-	52	71	30	58	1.4	M 6	1/4-20	29
570077-C9	DCE-S-6-38-PP-C9	6	38	1 1/2	52	71	30	58	1.4	M 6	1/4-20	27
570079-C9	DCE-S-6-40-PP-C9	6	40	-	52	71	30	58	1.4	M 6	1/4-20	25
570081-C9	DCE-S-6-42.4-PP-C9	6	42.4	-	52	71	30	58	1.4	M 6	1/4-20	25
570083-C9	DCE-S-6-45-PP-C9	6	45	-	52	71	30	58	1.4	M 6	1/4-20	22
570091-C9	DCE-S-7-48.3-PP-C9	7	48.3	1 1/2	66	86	30	66	1.4	M 6	1/4-20	37
570093-C9	DCE-S-7-50-PP-C9	7	50	-	66	86	30	66	1.4	M 6	1/4-20	34
570095-C9	DCE-S-7-50.8-PP-C9	7	50.8	-	66	86	30	66	1.4	M 6	1/4-20	33
570097-C9	DCE-S-7-54-PP-C9	7	54	1 3/4	66	86	30	66	1.4	M 6	1/4-20	31



Accessories for hydraulic systems