

- 1
- 2
- 3
- 4
- 5
- 6
- 7
- 8
- 9
- 10
- 11
- 12
- 13
- 14
- 15
- 16
- 17
- 18

MATERIAL

Die-cast zinc alloy.

GUIDE ELEMENTS

Acetal resin based (POM) technopolymer.

WORKING TEMPERATURE

80°C.

STANDARD EXECUTIONS

Pass-through holes for countersunk head screws.

- **CMUM-SW**: epoxy resin coating, RAL 9005 black colour, matte finish.
- **CMUM-SR**: epoxy resin coating, RAL 9006 light grey colour, matte finish.

FEATURES AND APPLICATIONS

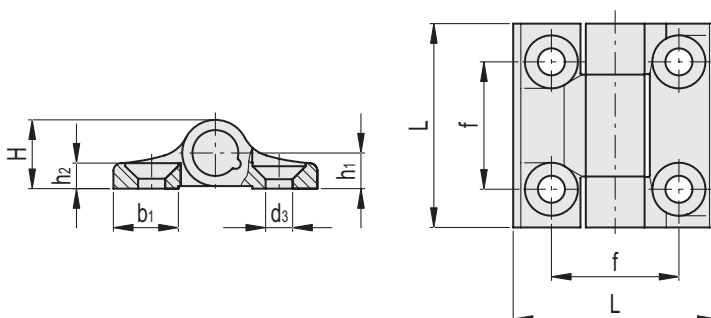
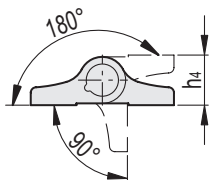
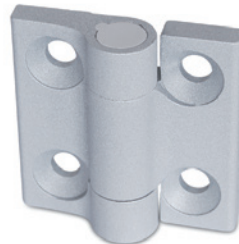
CMUM hinges match perfectly with hinges CMUF, CMUF-AH, CMMR e CMVT as complementary hinges.

ROTATION ANGLE (APPROXIMATE VALUE)

Max 270° (-90° and +180° being 0° the condition where the two interconnected surfaces are on the same plane).

ACCESSORIES ON REQUEST

- PCM-SP: spacer plates for hinges (see page -).
- PCM-TH: spacer for hinge fixing (see page -).



Conversion Table	
1 mm = 0.039 inch	
mm	inch
60	2.36

CMUM-SW

METRIC

Code	Description	L	d3	f	H	h1	h2	h4	b1	⚖
428887	CMUM.60-SH-8-SW	60	8.3	36	18.5	9.5	7.5	19	20	140

CMUM-SR

METRIC

Code	Description	L	d3	f	H	h1	h2	h4	b1	⚖
428886	CMUM.60-SH-8-SR	60	8.3	36	18.5	9.5	7.5	19	20	140

Hinges and accessories