

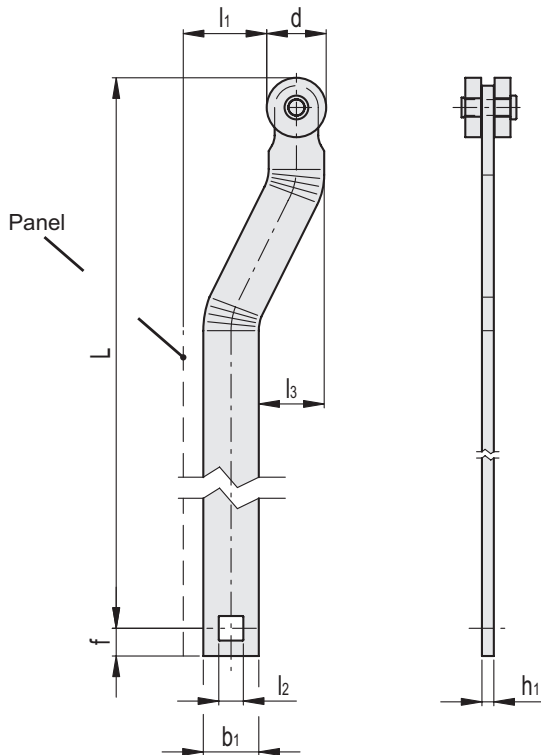
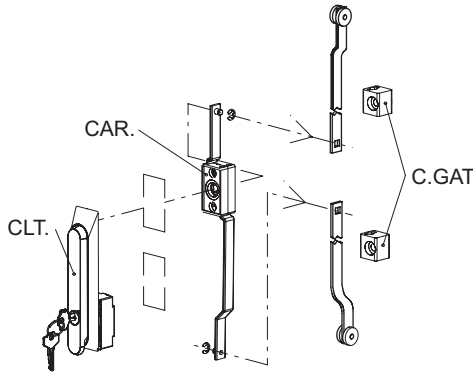
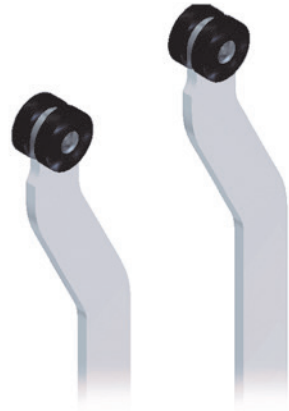
- 1
- 2
- 3
- 4
- 5
- 6
- 7
- 8
- 9
- 10
- 11
- 12
- 13
- 14
- 15
- 16
- 17
- 18
- 19

STANDARD EXECUTION

Pair of galvanized steel flat rods, cross section 14x3 mm, length 1,000 mm and black technopolymer end wheels, for frame thicknesses of 20 or 25 mm.

FEATURES AND APPLICATIONS

The pair of C.AT rods are to be assembled together with the rod guides C.GAT and rod controls CAR, one rod guide for every 500 mm of rod length. (See assembly diagram).
Used for latches with CLT handles. (see page 1050).



Conversion Table	
1 mm = 0,039 inch	
mm	inch
1000	39

Code	Description	L	d	h1	l1	l2	l3	b1	h1	d	f	⚖
421135	C.AT 1000-20	1000	15 +0/-0.1	3	20	6.2 +0.1/0	16.5	14	3	15 +0/-0.1	7	680
421136	C.AT 1000-25	1000	15 +0/-0.1	3	25	6.2 +0.1/0	21.5	14	3	15 +0/-0.1	7	328