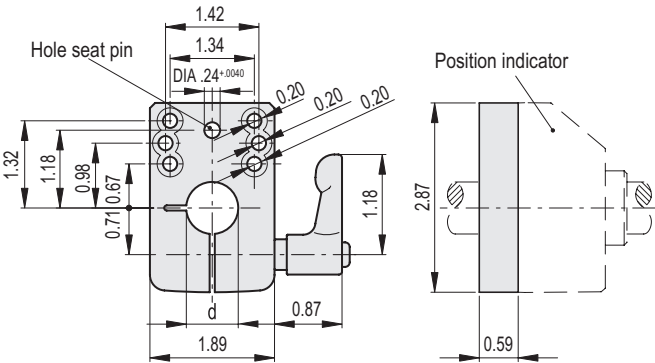


MATERIAL

Die-cast zinc alloy bases for spindle locking, epoxy resin coating, black colour, matte finish.
GN 302 adjustable handle with die-cast zinc alloy lever body and AISI 304 stainless steel clamping element.

FEATURES AND APPLICATIONS

BSA52-E locking bases allow an easy and quick locking of the spindles after their positioning. DIA 0.24 (Ø 6.1 mm) hole to fit the referring pin of the indicator. Handle position either on the right or on the left. Fitting to the machine by means of two M5 cylindrical-head screws (not included in the supply).



Code	Description	d	⚖
CE999094	BSA52-E-1/2	0.500	0.54
CE999095	BSA52-E-5/8	0.625	0.53
CE999099	BSA52-E-3/4	0.750	0.51