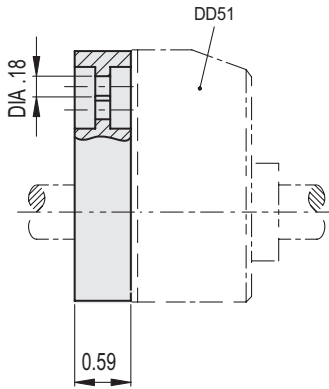
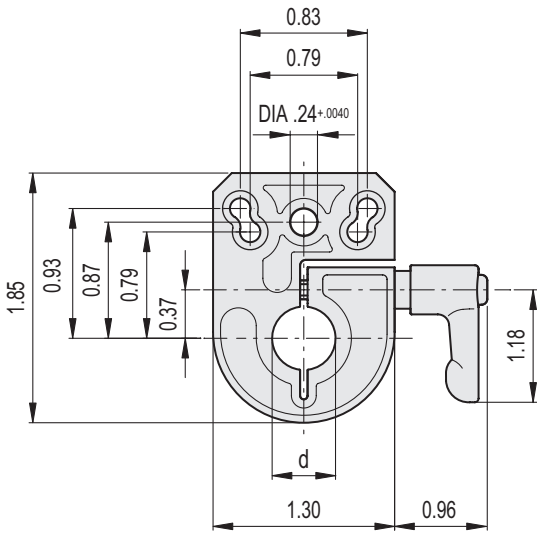


MATERIAL

Die-cast zinc alloy bases for spindle locking, epoxy resin coating, black colour, matte finish.  
GN 302.1 adjustable handle with lever body in die-cast zinc alloy, black color and AISI 303 stainless steel clamping element.

FEATURES AND APPLICATIONS

BSA-N51 locking bases allow an easy and quick locking of the spindles after their positioning. DIA 0.24 (Ø 6.1 mm) hole to fit the referring pin of the indicator. Handle position either on the right or on the left. Fitting to the machine by means of two M4 cylindrical-head screws (not included in the supply).



Code	Description	d	⚖
CE985915	BSA-N51-1/4	0.250	0.24
CE985917	BSA-N51-3/8	0.375	0.23
CE985919	BSA-N51-1/2	0.500	0.22