

MATERIAL

Glass-fibre reinforced polyamide based (PA) technopolymer.

SCREWS AND NUTS

Cylindrical head screws with hexagon socket and AISI 316 stainless steel nuts supplied assembled with the two half-rings.

FEATURES AND APPLICATIONS

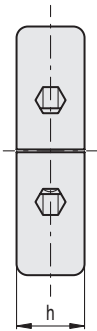
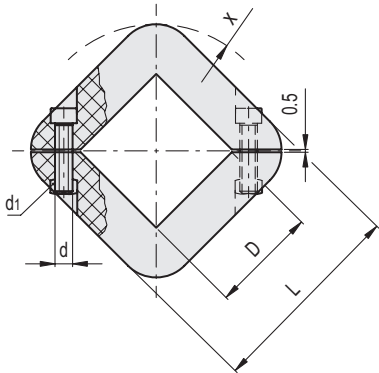
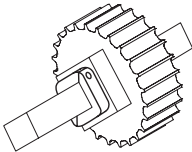
- Suitable for assembly on idle shafts as end stops, for fixing end limit switches, pulleys, supporting pins or other components.
- They avoid damage to the surfaces of the shaft.
- Anticorrosive material: possibility of use even in the presence of liquids.
- Resistant to several cleaning cycles with solvents and other chemical agents, for this reason they can be used for applications in the pharmaceutical or food industry.

TECHNICAL DATA

Assembly on square shafts with tolerance $0 \div +0.2$.



Application example



Conversion Table
1 mm = 0.039 inch

D	
mm	inch
25	0.98
30	1.17
40	1.56
50	1.95
60	2.34

METRIC

Code	Description	D	d	d1	d2	L	h	x	Maximum tightening torque [Nm]	⚖
319952	ANPS-Q-25	25	M6	M6	10	62	18	37	5	76
319962	ANPS-Q-30	30	M6	M6	10	62	18	37	5	72
319982	ANPS-Q-40	40	M6	M6	10	72	18	44	5	75
319987	ANPS-Q-50	50	M6	M6	10	82	18	51	5	98
319996	ANPS-Q-60	60	M6	M6	10	92	18	58	5	110