

MATERIAL

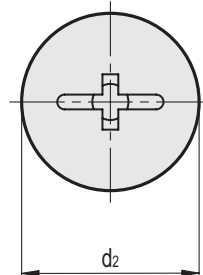
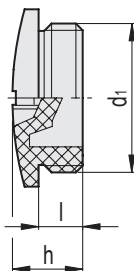
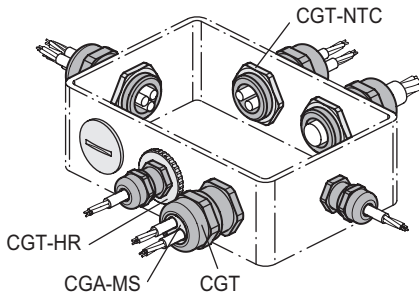
Glasfiberförstärkt polyamidbaserad (PA) teknopolymer, RAL 7035 (C3) grå färg eller RAL 9005 (C9) svart färg.

STANDARDUTFÖRANDE

- **CGT-TC-S**: metrisk gänga, krysspår, grå färg.
- **CGT-TC-AV**: metrisk gänga, rakt spår, svart färg.
- **CGT-TC-PG-AV**: PG-gänga, rakt spår, grå eller svart färg.

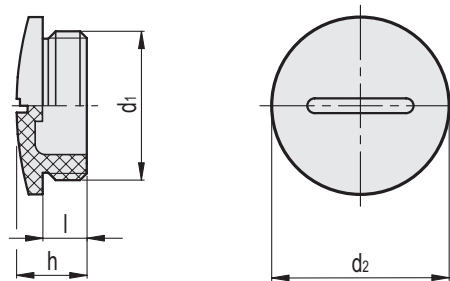
KÄNNETECKEN OCH ANVÄNDNING

De används för att tätat ej använda hål i elektrisk utrustning, till exempel fördelningscentraler eller kopplingsdosor, och säkerställer tät passform och skydd mot damm och fukt.



CGT-TC-S

| Kod | Description | d ₁ | d ₂ | h | l | ⚖️ |
|-----------|---------------------|----------------|----------------|------|----|----|
| 560251-C3 | CGT-TC-M12x1,5-S-C3 | M 12 x 1.5 | 15 | 8 | 6 | 1 |
| 560253-C3 | CGT-TC-M16x1,5-S-C3 | M 16 x 1.5 | 20 | 9 | 6 | 2 |
| 560255-C3 | CGT-TC-M20x1,5-S-C3 | M 20 x 1.5 | 24 | 9.5 | 6 | 2 |
| 560257-C3 | CGT-TC-M25x1,5-S-C3 | M 25 x 1.5 | 29.7 | 11.5 | 8 | 4 |
| 560259-C3 | CGT-TC-M32x1,5-S-C3 | M 32 x 1.5 | 37.1 | 12 | 8 | 5 |
| 560261-C3 | CGT-TC-M40x1,5-S-C3 | M 40 x 1.5 | 46 | 13 | 8 | 8 |
| 560263-C3 | CGT-TC-M50x1,5-S-C3 | M 50 x 1.5 | 56.3 | 15 | 10 | 12 |
| 560265-C3 | CGT-TC-M63x1,5-S-C3 | M 63 x 1.5 | 69.3 | 17 | 12 | 19 |



CGT-TC-AV

| Kod | Description | d ₁ | d ₂ | h | l | ⚖ |
|-----------|----------------------|----------------|----------------|------|----|----|
| 560251-C9 | CGT-TC-M12x1,5-AV-C9 | M 12 x 1.5 | 15 | 8 | 6 | 1 |
| 560253-C9 | CGT-TC-M16x1,5-AV-C9 | M 16 x 1.5 | 20 | 9 | 6 | 2 |
| 560255-C9 | CGT-TC-M20x1,5-AV-C9 | M 20 x 1.5 | 24 | 9.5 | 6 | 2 |
| 560257-C9 | CGT-TC-M25x1,5-AV-C9 | M 25 x 1.5 | 29.7 | 11.5 | 8 | 4 |
| 560259-C9 | CGT-TC-M32x1,5-AV-C9 | M 32 x 1.5 | 37.1 | 12 | 8 | 5 |
| 560261-C9 | CGT-TC-M40x1,5-AV-C9 | M 40 x 1.5 | 46 | 13 | 8 | 8 |
| 560263-C9 | CGT-TC-M50x1,5-AV-C9 | M 50 x 1.5 | 56.3 | 15 | 10 | 12 |
| 560265-C9 | CGT-TC-M63x1,5-AV-C9 | M 63 x 1.5 | 69.3 | 17 | 12 | 19 |

CGT-TC-PG-AV

| Kod | Description | d ₁ | d ₂ | h | l | ⚖ |
|-----------|-------------------|----------------|----------------|------|-----|----|
| 560281-C3 | CGT-TC-PG7-AV-C3 | PG 7 | 15 | 8 | 6 | 1 |
| 560281-C9 | CGT-TC-PG7-AV-C9 | PG 7 | 15 | 8 | 6 | 1 |
| 560283-C3 | CGT-TC-PG9-AV-C3 | PG 9 | 19.1 | 9.5 | 6.5 | 1 |
| 560283-C9 | CGT-TC-PG9-AV-C9 | PG 9 | 19.1 | 9.5 | 6.5 | 1 |
| 560285-C3 | CGT-TC-PG11-AV-C3 | PG 11 | 22.1 | 10 | 6.5 | 2 |
| 560285-C9 | CGT-TC-PG11-AV-C9 | PG 11 | 22.1 | 10 | 6.5 | 2 |
| 560287-C3 | CGT-TC-PG13-AV-C3 | PG 13.5 | 25.2 | 10 | 6.5 | 2 |
| 560287-C9 | CGT-TC-PG13-AV-C9 | PG 13.5 | 25.2 | 10 | 6.5 | 2 |
| 560289-C3 | CGT-TC-PG16-AV-C3 | PG 16 | 27.1 | 10 | 6.5 | 3 |
| 560289-C9 | CGT-TC-PG16-AV-C9 | PG 16 | 27.1 | 10 | 6.5 | 3 |
| 560291-C3 | CGT-TC-PG21-AV-C3 | PG 21 | 33.2 | 12 | 8 | 4 |
| 560291-C9 | CGT-TC-PG21-AV-C9 | PG 21 | 33.2 | 12 | 8 | 4 |
| 560293-C3 | CGT-TC-PG29-AV-C3 | PG 29 | 44 | 12.5 | 8 | 6 |
| 560293-C9 | CGT-TC-PG29-AV-C9 | PG 29 | 44 | 12.5 | 8 | 6 |
| 560295-C3 | CGT-TC-PG36-AV-C3 | PG 36 | 55 | 14 | 10 | 10 |
| 560295-C9 | CGT-TC-PG36-AV-C9 | PG 36 | 55 | 14 | 10 | 10 |
| 560297-C3 | CGT-TC-PG42-AV-C3 | PG 42 | 62 | 14 | 10 | 16 |
| 560297-C9 | CGT-TC-PG42-AV-C9 | PG 42 | 62 | 14 | 10 | 16 |
| 560299-C3 | CGT-TC-PG48-AV-C3 | PG 48 | 68.3 | 16 | 12 | 24 |
| 560299-C9 | CGT-TC-PG48-AV-C9 | PG 48 | 68.3 | 16 | 12 | 24 |