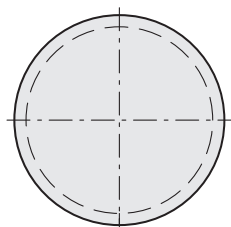
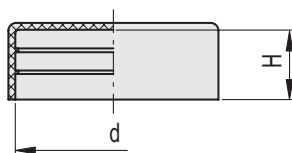


MATERIALE

Polietilene (PE), finitura mat.

FISSAGGIO

L'inserimento alle estremità di tubi può essere effettuato a mano o con una mazzuola.



La geometria della parte del terminale che si innesta nel tubo può differire per le diverse dimensioni.

Codice	Descrizione	d	H	△	Codice	Descrizione	d	H	△
437451	NCT.4	4	18.8	0.5	437529	NCT.41.3	41.3	20	4.4
437453	NCT.5	5	18.8	0.3	437531	NCT.42.4	42.4	25.3	5.3
437455	NCT.6	6	18.5	1	437533	NCT.44.5	44.5	21.2	4
437457	NCT.6.35	6.35	18.5	0.6	437535	NCT.45.4	45.4	21.2	4.4
437459	NCT.7	7	18.5	0.5	437537	NCT.47.5	47.5	25	6.7
437461	NCT.8	8	19.8	0.5	437539	NCT.48.3	48.3	30	6.5
437463	NCT.9.6	9.6	18.8	1	437541	NCT.51	51	29.5	8.7
437465	NCT.10	10	18.8	0.7	437543	NCT.52	52	30.8	11
437467	NCT.11	11	19.7	1	437545	NCT.52.8	52.8	30.5	10.6
437469	NCT.11.5	11.5	19.7	1	437547	NCT.54	54	30	9
437471	NCT.12	12	19.6	0.8	437549	NCT.55	55	30	10
437473	NCT.12.7	12.7	19.9	1	437551	NCT.57	57	30	7.4
437475	NCT.13	13	19.9	1	437553	NCT.60.3	60.3	27.8	8.6
437477	NCT.13.7	13.7	19.9	1	437555	NCT.63.5	63.5	28	11
437479	NCT.14	14	16.7	1	437557	NCT.65	65	28	11.6
437481	NCT.15	15	20.1	1	437559	NCT.67	67	35.4	14
437483	NCT.15.5	15.5	16.7	1	437561	NCT.70	70	35.4	15
437485	NCT.16	16	16.7	1	437563	NCT.73	73	29	16.7
437487	NCT.17.2	17.2	18	1.4	437565	NCT.75	75	29	17.3
437489	NCT.18	18	18	1.4	437567	NCT.76	76	33	14.2
437491	NCT.18.5	15.5	18	1.3	437569	NCT.77	77	30.5	17
437493	NCT.19	19	18	1.4	437571	NCT.78	78	30.5	15
437495	NCT.20	20	21.3	1.35	437573	NCT.80	80	30.5	14.3
437497	NCT.21.3	21.3	20.8	1.9	437575	NCT.82	82	30.5	12.4
437499	NCT.22	22	20.8	1.8	437577	NCT.83	83	30.5	20
437501	NCT.23.2	23.2	21	2.7	437579	NCT.85	85	30.5	15.6
437503	NCT.24	24	21	2.6	437581	NCT.88.9	88.9	35.6	17
437505	NCT.25.4	25.4	21	2.5	437583	NCT.90	90	30	23.5
437507	NCT.26	26	25	2.3	437585	NCT.92.4	92.4	30	19.5
437509	NCT.26.9	26.9	25	2.8	437587	NCT.95	95	39	20
437511	NCT.28.5	28.5	25	2.7	437589	NCT.98	98	31	33
437513	NCT.29	29	25	2.7	437591	NCT.100	100	31	32
437515	NCT.30	30	25.6	3	437593	NCT.101.6	101.6	29.5	20
437517	NCT.31.8	31.8	19.2	4	437595	NCT.103	103	41	20
437519	NCT.33.7	33.7	19.2	3.4	437597	NCT.106	106	41	29
437521	NCT.35	35	25.6	4	437599	NCT.108	108	38.6	31
437523	NCT.36.5	36.5	20.6	3	437601	NCT.110	110	38.6	31.5
437525	NCT.38	38	20.6	4	437603	NCT.114.3	114.3	40.3	33.6
437527	NCT.40	40	25.6	5					