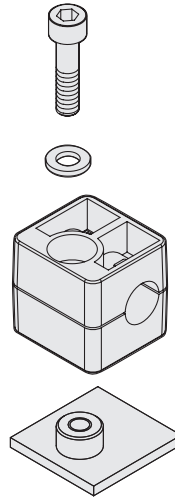
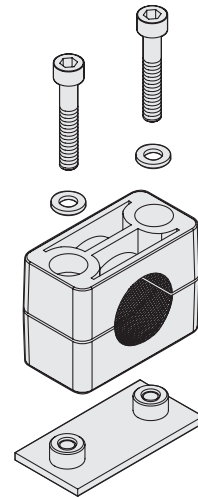


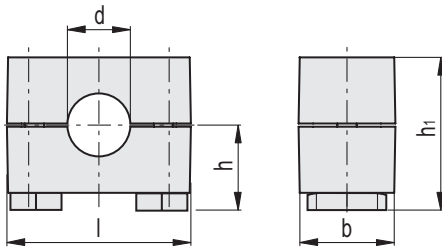
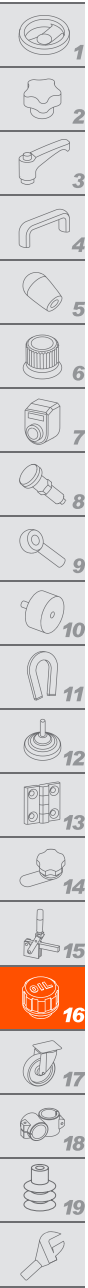
DCK-S-1-SRC-WA-PL
(Groupe 1)



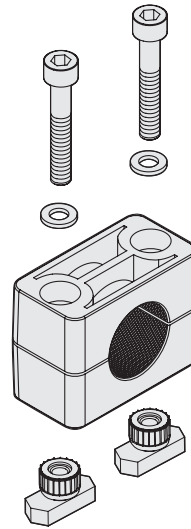
DCK-S-*-SRC-WA-PL
(*Groupe 2÷7)



Code	Description	Groupe	b	d	d Tube [GAS]	l	h	h1	⚖
571001-C9	DCK-S-1-6-SRC-WA-PL-PP-C9	1	30	6	-	31.5	16.5	31.6	45
571003-C9	DCK-S-1-8-SRC-WA-PL-PP-C9	1	30	5/16	5/16	31.5	16.5	31.6	45
571005-C9	DCK-S-1-10-SRC-WA-PL-PP-C9	1	30	10	-	31.5	16.5	31.6	44
571007-C9	DCK-S-1-12-SRC-WA-PL-PP-C9	1	30	12	-	31.5	16.5	31.6	43
571011-C9	DCK-S-2-6-SRC-WA-PL-PP-C9	2	30	6	-	34.5	16.5	31.6	62
571013-C9	DCK-S-2-6.4-SRC-WA-PL-PP-C9	2	30	1/4	1/4	34.5	16.5	31.6	62
571015-C9	DCK-S-2-8-SRC-WA-PL-PP-C9	2	30	5/16	5/16	34.5	16.5	31.6	61
571017-C9	DCK-S-2-9.5-SRC-WA-PL-PP-C9	2	30	3/8	3/8	34.5	16.5	31.6	61
571019-C9	DCK-S-2-10-SRC-WA-PL-PP-C9	2	30	10	-	34.5	16.5	31.6	61
571021-C9	DCK-S-2-12-SRC-WA-PL-PP-C9	2	30	12	-	34.5	16.5	31.6	60
571023-C9	DCK-S-2-12.7-SRC-WA-PL-PP-C9	2	30	1/2	1/2	34.5	16.5	31.6	60
571031-C9	DCK-S-3-12.7-SRC-WA-PL-PP-C9	3	30	1/2	1/2	40.5	19.5	37.6	75
571033-C9	DCK-S-3-14-SRC-WA-PL-PP-C9	3	30	14	-	40.5	19.5	37.6	71
571035-C9	DCK-S-3-15-SRC-WA-PL-PP-C9	3	30	15	-	40.5	19.5	37.6	71
571037-C9	DCK-S-3-16-SRC-WA-PL-PP-C9	3	30	5/8	5/8	40.5	19.5	37.6	70
571039-C9	DCK-S-3-17.2-SRC-WA-PL-PP-C9	3	30	17.2	-	40.5	19.5	37.6	70
571041-C9	DCK-S-3-18-SRC-WA-PL-PP-C9	3	30	18	-	40.5	19.5	37.6	69
571051-C9	DCK-S-4-19-SRC-WA-PL-PP-C9	4	30	3/4	3/4	48	21	40.6	88
571053-C9	DCK-S-4-20-SRC-WA-PL-PP-C9	4	30	20	-	48	21	40.6	87
571055-C9	DCK-S-4-21.3-SRC-WA-PL-PP-C9	4	30	21.3	-	48	21	40.6	86
571057-C9	DCK-S-4-22-SRC-WA-PL-PP-C9	4	30	7/8	7/8	48	21	40.6	86
571059-C9	DCK-S-4-25-SRC-WA-PL-PP-C9	4	30	25	-	48	21	40.6	83
571061-C9	DCK-S-4-25.4-SRC-WA-PL-PP-C9	4	30	1	1	48	21	40.6	82
571071-C9	DCK-S-5-26.9-SRC-WA-PL-PP-C9	5	30	26.9	-	56.5	24	46.6	101
571073-C9	DCK-S-5-28-SRC-WA-PL-PP-C9	5	30	28	-	56.5	24	46.6	100
571075-C9	DCK-S-5-30-SRC-WA-PL-PP-C9	5	30	30	-	56.5	24	46.6	98
571077-C9	DCK-S-5-32-SRC-WA-PL-PP-C9	5	30	1 1/4	1 1/4	56.5	24	46.6	96
571081-C9	DCK-S-6-32-SRC-WA-PL-PP-C9	6	30	1 1/4	1 1/4	69.5	32	62.6	113
571083-C9	DCK-S-6-33.7-SRC-WA-PL-PP-C9	6	30	33.7	-	69.5	32	62.6	111
571085-C9	DCK-S-6-35-SRC-WA-PL-PP-C9	6	30	35	-	69.5	32	62.6	108
571087-C9	DCK-S-6-38-SRC-WA-PL-PP-C9	6	30	1 1/2	1 1/2	69.5	32	62.6	105
571089-C9	DCK-S-6-40-SRC-WA-PL-PP-C9	6	30	40	-	69.5	32	62.6	101
571091-C9	DCK-S-6-42.4-SRC-WA-PL-PP-C9	6	30	42.4	-	69.5	32	62.6	99
571093-C9	DCK-S-6-45-SRC-WA-PL-PP-C9	6	30	45	-	69.5	32	62.6	93
571101-C9	DCK-S-7-48.3-SRC-WA-PL-PP-C9	7	30	-	1 1/2	85.5	36	70.6	173
571103-C9	DCK-S-7-50-SRC-WA-PL-PP-C9	7	30	50	-	85.5	36	70.6	167
571105-C9	DCK-S-7-50.8-SRC-WA-PL-PP-C9	7	30	2	2	85.5	36	70.6	166
571107-C9	DCK-S-7-54-SRC-WA-PL-PP-C9	7	30	-	1 3/4	85.5	36	70.6	161

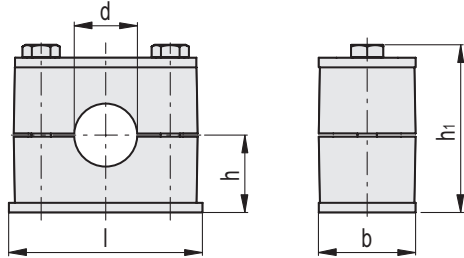


DCK-S*-SRC-WA-NTG
(*Groupe 2÷7)

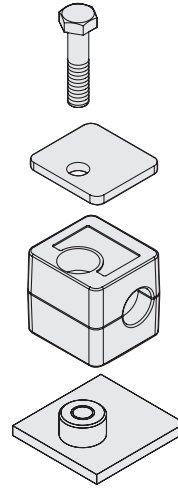


Code	Description	Groupe	b	d	d Tube [GAS]	l	h	h1	⚖
571111-C9	DCK-S-2-6-SRC-WA-NTG-PP-C9	2	30	6	-	37	19	34.1	54
571113-C9	DCK-S-2-6.4-SRC-WA-NTG-PP-C9	2	30	1/4	1/4	37	19	34.1	53
571115-C9	DCK-S-2-8-SRC-WA-NTG-PP-C9	2	30	5/16	5/16	37	19	34.1	53
571117-C9	DCK-S-2-9.5-SRC-WA-NTG-PP-C9	2	30	3/8	3/8	37	19	34.1	52
571119-C9	DCK-S-2-10-SRC-WA-NTG-PP-C9	2	30	10	-	37	19	34.1	52
571121-C9	DCK-S-2-12-SRC-WA-NTG-PP-C9	2	30	12	-	37	19	34.1	51
571123-C9	DCK-S-2-12.7-SRC-WA-NTG-PP-C9	2	30	1/2	1/2	37	19	34.1	51
571131-C9	DCK-S-3-12.7-SRC-WA-NTG-PP-C9	3	30	1/2	1/2	42	22	40.1	63
571133-C9	DCK-S-3-14-SRC-WA-NTG-PP-C9	3	30	14	-	42	22	40.1	59
571135-C9	DCK-S-3-15-SRC-WA-NTG-PP-C9	3	30	15	-	42	22	40.1	58
571137-C9	DCK-S-3-16-SRC-WA-NTG-PP-C9	3	30	5/8	5/8	42	22	40.1	57
571139-C9	DCK-S-3-17.2-SRC-WA-NTG-PP-C9	3	30	17.2	-	42	22	40.1	57
571141-C9	DCK-S-3-18-SRC-WA-NTG-PP-C9	3	30	18	-	42	22	40.1	56
571151-C9	DCK-S-4-19-SRC-WA-NTG-PP-C9	4	30	3/4	3/4	50	23.5	43.1	69
571153-C9	DCK-S-4-20-SRC-WA-NTG-PP-C9	4	30	20	-	50	23.5	43.1	69
571155-C9	DCK-S-4-21.3-SRC-WA-NTG-PP-C9	4	30	21.3	-	50	23.5	43.1	67
571157-C9	DCK-S-4-22-SRC-WA-NTG-PP-C9	4	30	7/8	7/8	50	23.5	43.1	67
571159-C9	DCK-S-4-25-SRC-WA-NTG-PP-C9	4	30	25	-	50	23.5	43.1	64
571161-C9	DCK-S-4-25.4-SRC-WA-NTG-PP-C9	4	30	1	1	50	23.5	43.1	64
571171-C9	DCK-S-5-26.9-SRC-WA-NTG-PP-C9	5	30	26.9	-	57	26.5	49.1	76
571173-C9	DCK-S-5-28-SRC-WA-NTG-PP-C9	5	30	28	-	57	26.5	49.1	75
571175-C9	DCK-S-5-30-SRC-WA-NTG-PP-C9	5	30	30	-	57	26.5	49.1	72
571177-C9	DCK-S-5-32-SRC-WA-NTG-PP-C9	5	30	1 1/4	1 1/4	57	26.5	49.1	71
571181-C9	DCK-S-6-32-SRC-WA-NTG-PP-C9	6	30	1 1/4	1 1/4	71	34.5	65.1	111
571183-C9	DCK-S-6-33.7-SRC-WA-NTG-PP-C9	6	30	33.7	-	71	34.5	65.1	109
571185-C9	DCK-S-6-35-SRC-WA-NTG-PP-C9	6	30	35	-	71	34.5	65.1	105
571187-C9	DCK-S-6-38-SRC-WA-NTG-PP-C9	6	30	1 1/2	1 1/2	71	34.5	65.1	103
571189-C9	DCK-S-6-40-SRC-WA-NTG-PP-C9	6	30	40	-	71	34.5	65.1	99
571191-C9	DCK-S-6-42.4-SRC-WA-NTG-PP-C9	6	30	42.4	-	71	34.5	65.1	97
571193-C9	DCK-S-6-45-SRC-WA-NTG-PP-C9	6	30	45	-	71	34.5	65.1	91
571201-C9	DCK-S-7-48.3-SRC-WA-NTG-PP-C9	7	30	-	1 1/2	86	38.5	73.1	126
571203-C9	DCK-S-7-50-SRC-WA-NTG-PP-C9	7	30	50	-	86	38.5	73.1	120
571205-C9	DCK-S-7-50.8-SRC-WA-NTG-PP-C9	7	30	2	2	86	38.5	73.1	119
571207-C9	DCK-S-7-54-SRC-WA-NTG-PP-C9	7	30	-	1 3/4	86	38.5	73.1	114

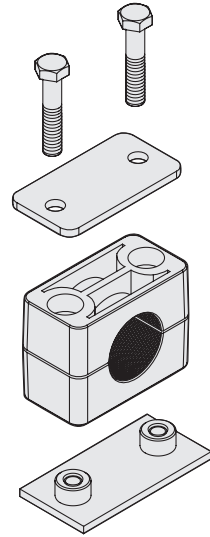
Accessoires pour système aérodynamique



DCK-S-1-SRE-PU-PL
(Groupe 1)



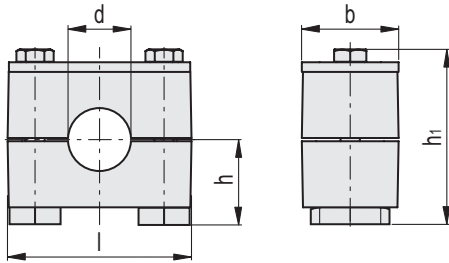
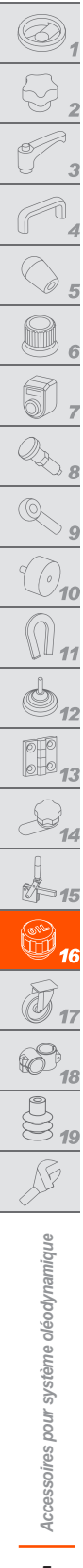
DCK-S-+SRE-PU-PL
(*Groupe 2÷7)



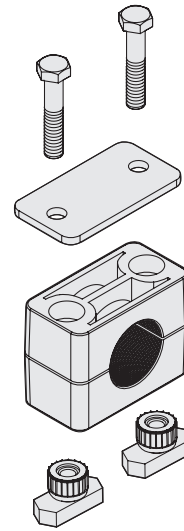
Code	Description	Groupe	b	d	d Tube [GAS]	l	h	h1	⚖
571211-C9	DCK-S-1-6-SRE-PU-PL-PP-C9	1	30	6	-	31.5	16.5	37	65
571213-C9	DCK-S-1-8-SRE-PU-PL-PP-C9	1	30	5/16	5/16	31.5	16.5	37	64
571215-C9	DCK-S-1-10-SRE-PU-PL-PP-C9	1	30	10	-	31.5	16.5	37	63
571217-C9	DCK-S-1-12-SRE-PU-PL-PP-C9	1	30	12	-	31.5	16.5	37	63
571221-C9	DCK-S-2-6-SRE-PU-PL-PP-C9	2	30	6	-	36	16.5	37	88
571223-C9	DCK-S-2-6.4-SRE-PU-PL-PP-C9	2	30	1/4	1/4	36	16.5	37	87
571225-C9	DCK-S-2-8-SRE-PU-PL-PP-C9	2	30	5/16	5/16	36	16.5	37	87
571227-C9	DCK-S-2-9.5-SRE-PU-PL-PP-C9	2	30	3/8	3/8	36	16.5	37	86
571229-C9	DCK-S-2-10-SRE-PU-PL-PP-C9	2	30	10	-	36	16.5	37	86
571231-C9	DCK-S-2-12-SRE-PU-PL-PP-C9	2	30	12	-	36	16.5	37	85
571233-C9	DCK-S-2-12.7-SRE-PU-PL-PP-C9	2	30	1/2	1/2	36	16.5	37	85
571241-C9	DCK-S-3-12.7-SRE-PU-PL-PP-C9	3	30	1/2	1/2	42	19.5	43	106
571243-C9	DCK-S-3-14-SRE-PU-PL-PP-C9	3	30	14	-	42	19.5	43	102
571245-C9	DCK-S-3-15-SRE-PU-PL-PP-C9	3	30	15	-	42	19.5	43	102
571247-C9	DCK-S-3-16-SRE-PU-PL-PP-C9	3	30	5/8	5/8	42	19.5	43	101
571249-C9	DCK-S-3-17.2-SRE-PU-PL-PP-C9	3	30	17.2	-	42	19.5	43	100
571251-C9	DCK-S-3-18-SRE-PU-PL-PP-C9	3	30	18	-	42	19.5	43	100
571261-C9	DCK-S-4-19-SRE-PU-PL-PP-C9	4	30	3/4	3/4	50	21	46	124
571263-C9	DCK-S-4-20-SRE-PU-PL-PP-C9	4	30	20	-	50	21	46	123
571265-C9	DCK-S-4-21.3-SRE-PU-PL-PP-C9	4	30	21.3	-	50	21	46	122
571267-C9	DCK-S-4-22-SRE-PU-PL-PP-C9	4	30	7/8	7/8	50	21	46	122
571269-C9	DCK-S-4-25-SRE-PU-PL-PP-C9	4	30	25	-	50	21	46	119
571271-C9	DCK-S-4-25.4-SRE-PU-PL-PP-C9	4	30	1	1	50	21	46	118
571281-C9	DCK-S-5-26.9-SRE-PU-PL-PP-C9	5	30	26.9	-	60	24	52	142
571283-C9	DCK-S-5-28-SRE-PU-PL-PP-C9	5	30	28	-	60	24	52	141
571285-C9	DCK-S-5-30-SRE-PU-PL-PP-C9	5	30	30	-	60	24	52	139
571287-C9	DCK-S-5-32-SRE-PU-PL-PP-C9	5	30	1 1/4	1 1/4	60	24	52	137
571291-C9	DCK-S-6-32-SRE-PU-PL-PP-C9	6	30	1 1/4	1 1/4	71	32	68	162
571293-C9	DCK-S-6-33.7-SRE-PU-PL-PP-C9	6	30	33.7	-	71	32	68	160
571295-C9	DCK-S-6-35-SRE-PU-PL-PP-C9	6	30	35	-	71	32	68	156
571297-C9	DCK-S-6-38-SRE-PU-PL-PP-C9	6	30	1 1/2	1 1/2	71	32	68	153
571299-C9	DCK-S-6-40-SRE-PU-PL-PP-C9	6	30	40	-	71	32	68	150
571301-C9	DCK-S-6-42.4-SRE-PU-PL-PP-C9	6	30	42.4	-	71	32	68	148
571303-C9	DCK-S-6-45-SRE-PU-PL-PP-C9	6	30	45	-	71	32	68	142
571311-C9	DCK-S-7-48.3-SRE-PU-PL-PP-C9	7	30	-	1 1/2	88	36	76	234
571313-C9	DCK-S-7-50-SRE-PU-PL-PP-C9	7	30	50	-	88	36	76	229
571315-C9	DCK-S-7-50.8-SRE-PU-PL-PP-C9	7	30	2	2	88	36	76	227
571317-C9	DCK-S-7-54-SRE-PU-PL-PP-C9	7	30	-	1 3/4	88	36	76	222



Accessoires pour système aérodynamique



DCK-S*-SRE-PU-NTG
(*Groupe 2÷7)



Code	Description	Groupe	b	d	d Tube [GAS]	l	h	h1	⚖
571321-C9	DCK-S-2-6-SRE-PU-NTG-PP-C9	2	30	6	-	37	19	39.5	79
571323-C9	DCK-S-2-6.4-SRE-PU-NTG-PP-C9	2	30	1/4	1/4	37	19	39.5	78
571325-C9	DCK-S-2-8-SRE-PU-NTG-PP-C9	2	30	5/16	5/16	37	19	39.5	78
571327-C9	DCK-S-2-9.5-SRE-PU-NTG-PP-C9	2	30	3/8	3/8	37	19	39.5	78
571329-C9	DCK-S-2-10-SRE-PU-NTG-PP-C9	2	30	10	-	37	19	39.5	77
571331-C9	DCK-S-2-12-SRE-PU-NTG-PP-C9	2	30	12	-	37	19	39.5	76
571333-C9	DCK-S-2-12.7-SRE-PU-NTG-PP-C9	2	30	1/2	1/2	37	19	39.5	76
571341-C9	DCK-S-3-12.7-SRE-PU-NTG-PP-C9	3	30	1/2	1/2	42	22	45.5	82
571343-C9	DCK-S-3-14-SRE-PU-NTG-PP-C9	3	30	14	-	42	22	45.5	78
571345-C9	DCK-S-3-15-SRE-PU-NTG-PP-C9	3	30	15	-	42	22	45.5	77
571347-C9	DCK-S-3-16-SRE-PU-NTG-PP-C9	3	30	5/8	5/8	42	22	45.5	77
571349-C9	DCK-S-3-17.2-SRE-PU-NTG-PP-C9	3	30	17.2	-	42	22	45.5	76
571351-C9	DCK-S-3-18-SRE-PU-NTG-PP-C9	3	30	18	-	42	22	45.5	76
571361-C9	DCK-S-4-19-SRE-PU-NTG-PP-C9	4	30	3/4	3/4	50	23.5	48.5	94
571363-C9	DCK-S-4-20-SRE-PU-NTG-PP-C9	4	30	20	-	50	23.5	48.5	93
571365-C9	DCK-S-4-21.3-SRE-PU-NTG-PP-C9	4	30	21.3	-	50	23.5	48.5	92
571367-C9	DCK-S-4-22-SRE-PU-NTG-PP-C9	4	30	7/8	7/8	50	23.5	48.5	92
571369-C9	DCK-S-4-25-SRE-PU-NTG-PP-C9	4	30	25	-	50	23.5	48.5	89
571371-C9	DCK-S-4-25.4-SRE-PU-NTG-PP-C9	4	30	1	1	50	23.5	48.5	88
571381-C9	DCK-S-5-26.9-SRE-PU-NTG-PP-C9	5	30	26.9	-	57	26.5	54.5	105
571383-C9	DCK-S-5-28-SRE-PU-NTG-PP-C9	5	30	28	-	57	26.5	54.5	104
571385-C9	DCK-S-5-30-SRE-PU-NTG-PP-C9	5	30	30	-	57	26.5	54.5	101
571387-C9	DCK-S-5-32-SRE-PU-NTG-PP-C9	5	30	1 1/4	1 1/4	57	26.5	54.5	100
571391-C9	DCK-S-6-32-SRE-PU-NTG-PP-C9	6	30	1 1/4	1 1/4	71	34.5	70.5	148
571393-C9	DCK-S-6-33.7-SRE-PU-NTG-PP-C9	6	30	33.7	-	71	34.5	70.5	146
571395-C9	DCK-S-6-35-SRE-PU-NTG-PP-C9	6	30	35	-	71	34.5	70.5	143
571397-C9	DCK-S-6-38-SRE-PU-NTG-PP-C9	6	30	1 1/2	1 1/2	71	34.5	70.5	140
571399-C9	DCK-S-6-40-SRE-PU-NTG-PP-C9	6	30	40	-	71	34.5	70.5	136
571401-C9	DCK-S-6-42.4-SRE-PU-NTG-PP-C9	6	30	42.4	-	71	34.5	70.5	134
571403-C9	DCK-S-6-45-SRE-PU-NTG-PP-C9	6	30	45	-	71	34.5	70.5	128
571411-C9	DCK-S-7-48.3-SRE-PU-NTG-PP-C9	7	30	-	1 1/2	86	38.5	78.5	176
571413-C9	DCK-S-7-50-SRE-PU-NTG-PP-C9	7	30	50	-	86	38.5	78.5	170
571415-C9	DCK-S-7-50.8-SRE-PU-NTG-PP-C9	7	30	2	2	86	38.5	78.5	169
571417-C9	DCK-S-7-54-SRE-PU-NTG-PP-C9	7	30	-	1 3/4	86	38.5	78.5	164

Accessoires pour système aérodynamique