

MATERIAL

Stud, threaded sleeve and tightening ring nuts in nickel-plated brass.
Air fitting in blue anodised aluminium.

STANDARD EXECUTIONS

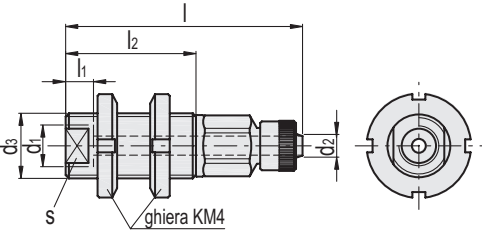
- **VPB-F**: with female threaded connection and straight quick fitting.
- **VPB-F-L**: with female threaded connection and L-shaped quick fitting.
- **VPB-M**: with male threaded connection and straight quick fitting.
- **VPB-M-L**: with male threaded connection and L-shaped quick fitting.

FEATURES

The VPB vacuum cup suspensions are threaded bushings, with tightening ring nuts for height adjustment and for mounting them on the automation.

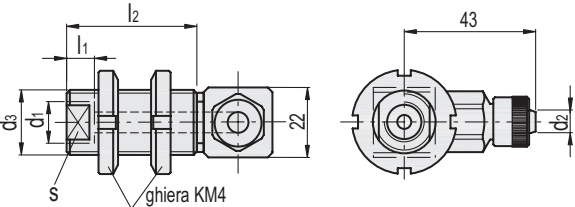
The threaded sleeve is used for fixing the vacuum cup with support; on the opposite side there is the quick fitting for connecting the suction hose.

Compatible with 6x8 diameter plastic hose.
See Technical Data for vacuum cups (on page -).



VPB-F

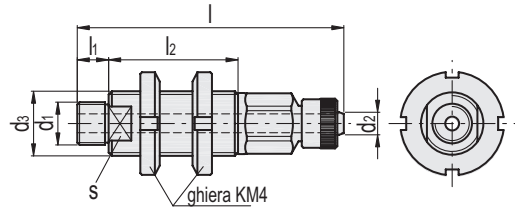
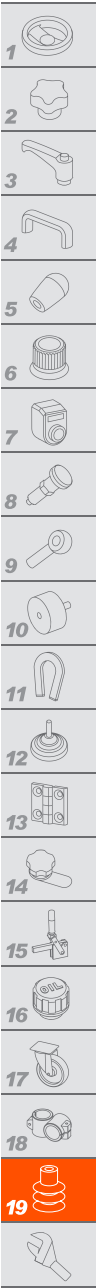
Code	Description	d1	d2*	d3	l	l1	l2	s	Δ
VV.40001	VPB-91-01-G1/4-F	G1/4	6	M20x1	74	10	40	17	162



VPB-F-L

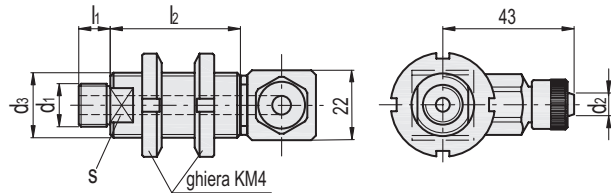
Code	Description	d1	d2*	d3	l1	l2	s	Δ
VV.40002	VPB-91-01-G1/4-F-L	G1/4	6	M20x1	10	40	17	177

* Compatible with compressed air tubes of the diameter in the table.



VPB-M

Code	Description	d1	d2*	d3	l	l1	l2	s	⚖
VV.40003	VPB-91-05-G1/4-M	G1/4	6	M20x1	84	10	40	17	170
VV.40005	VPB-91-06-G3/8-M	G3/8	6	M20x1	84	10	40	17	174



VPB-M-L

Code	Description	d1	d2*	d3	l1	l2	s	⚖
VV.40004	VPB-91-05-G1/4-M-L	G1/4	6	M20x1	10	40	17	185
VV.40006	VPB-91-06-G3/8-M-L	G3/8	6	M20x1	10	40	17	189

* Compatible with compressed air tubes of the diameter in the table.