

CLAMP

Glass-fibre reinforced polyamide based (PA) technopolymer, RAL 9005 (C9) black colour or grey RAL 7040 (C33) colour, resistant to UV rays, matte finish.

SCREWS AND NUTS (SUPPLIED)

Cylindrical-head screw with hexagon socket in AISI 304 stainless steel with anti-seizure treatment.

Self-locking nuts in AISI 304 stainless steel.

FEATURES

Clamps for tubes with a diameter of  $18 \pm 0.2$  and  $30 \pm 0.2$  mm.

For smaller diameter tubes, the hole reduction sleeve TCC-A can be used (ordered separately).

The "s" grub screws may be replaced by the kit TCC-KS.

TECHNICAL DATA

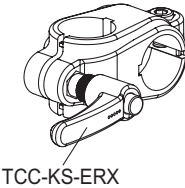
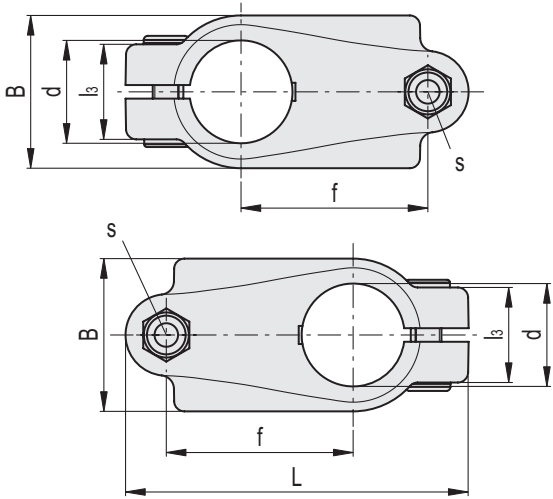
The resistance values shown in the table were measured during laboratory tests at ambient temperature with the screws tightened to the suggested torque "C#".

ACCESSORIES ON REQUEST (TO BE ORDERED SEPARATELY)

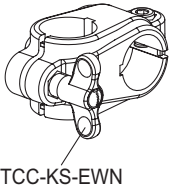
- TCC-A (see page -): reduction sleeves.
- TCC-KS (see page -): clamping kit.
- TCC-KV (see page -): screws and clamping nuts.
- GN 990 (see page -): connecting tubes.



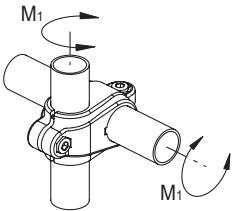
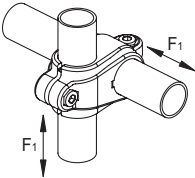
ELESA Original design



TCC-KS-ERX



TCC-KS-EWN



C9 RAL9005 C33 RAL7040

INOX STAINLESS STEEL

Code	Description	d	L	B	f	l3	s	C# [Nm]	F1* [N]	M1** [Nm]	⚖
600121-C9	TCC-CR-18-18-C9	18	65	29	34	21	M6	5	2150	17	41
600121-C33	TCC-CR-18-18-C33	18	65	29	34	21	M6	5	2150	17	41
600221-C9	TCC-CR-30-30-C9	30	100.5	45	54.5	27	M8	12	1350	21	123
600221-C33	TCC-CR-30-30-C33	30	100.5	45	54.5	27	M8	12	1350	21	123

# Suggested torque for screw assembly.

\* Resistance to tube pull out

\*\* Resistance to tube rotation