

MATERIAL

Glass-fibre reinforced polyamide based (PA) technopolymer, black colour, matte finish.

STANDARD EXECUTIONS

- **SC.GXX2**: three couples of dimples on the bottom of the housing (to drill according to the type of indicator) and two supplied M4x14 countersunk head screws.
- **SC.GXX5**: two holes for supplied M4x14 countersunk head screws.

APPLICATIONS

SC-XX indicator housings are suitable with gravity indicators on any handwheel or other control devices.

MATERIAL

Polyester based (PBT) technopolymer.

COLOUR

Light grey, matte finish.

MOUNTING

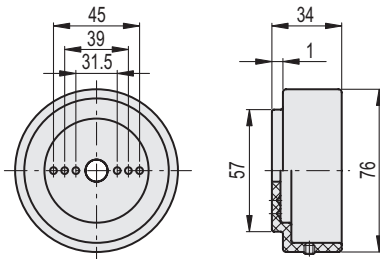
Push-fit. The cover can be removed by using a screwdriver in the proper cavity.

APPLICATIONS

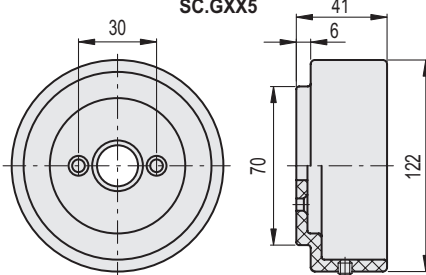
CP-XX covers are suitable for closing the indicator housing when the indicator is not required.



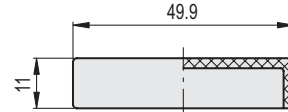
SC.GXX2



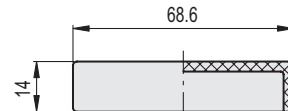
SC.GXX5



CP.X1



CP.X2



Code	Description	△	Handwheel/indicator combinations
CE.40002	SC.GXX2	72	GA02 - GA12 - GW12
CE.40005	SC.GXX5	191	GA05

Code	Description	△	Handwheels/knobs combinations
CE.40101	CP.X1	6	IZN.60-MBT.60-VHT.85
CE.40102	CP.X2	11	IZN.80-MBT.80-VHT.110-VDSC-XX - EWW-XX



- 1
- 2
- 3
- 4
- 5
- 6
- 7**
- 8
- 9
- 10
- 11
- 12
- 13
- 14
- 15
- 16
- 17
- 18