

**HANDLE SHANKS**

Glass-fibre reinforced polyamide based (PA) technopolymer, matte finish.

**TUBE**

Anodised aluminium in natural colour, sandblasted matte finish.

**BUTTON**

Aluminium, blue colour similar to RAL5002.

**STANDARD EXECUTIONS**

Nickel-plated steel bushings, threaded blind hole.

By keeping the button pressed, the air outlet channel switches between the two available:

- **RH-FG18-P5-L**: one pneumatic valve, connection on the left.
- **RH-FG18-P5-R**: one pneumatic valve, connection on the right.

By keeping one or both of the buttons pressed, the air outlet channel switches between the two available:

- **RH-FG18-P5-LL**: two pneumatic valves, connection on the left.
- **RH-FG18-P5-RR**: two pneumatic valves, connection on the right.

**FUNCTIONING**

The handle is supplied complete with quick couplings for direct connection to a Ø 4 mm tube.

The handle allows direct control of one or two double-acting pneumatic actuators (execution 5/2).

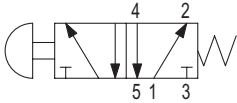
The handle has a pressure chamber discharge function.

**OTHER STANDARD EXECUTIONS**

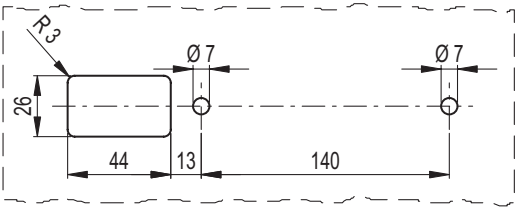
RH-VM-02: single complementary handle without push button and without valve RHVM-02.30.140.S11 (see page -).



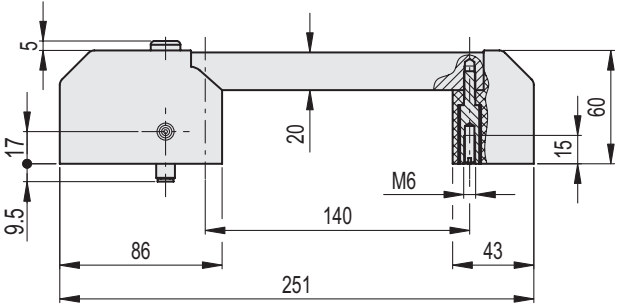
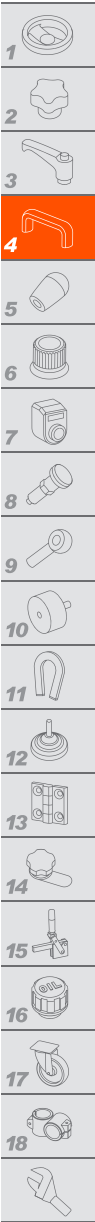
Pneumatic valve



Drilling template

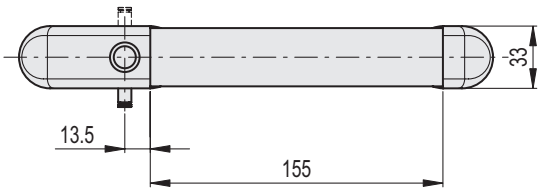
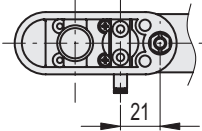
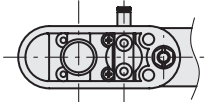


Technical features	
Functioning	Filtered air
Operating pressure	Max. 10 bar
Working temperature	-5° ÷ +70°C
Load capacity	120 NI/min (6 bar)
Action force	14 N (indipendente dalla pressione di esercizio)
Nominal diameter air passage	Ø 4 mm



RH-FG18-P5-L

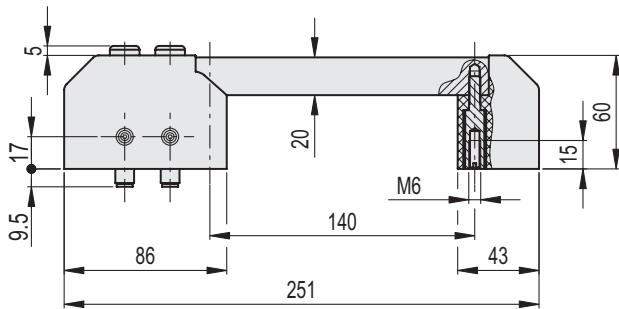
RH-FG18-P5-R



RH-FG18-P5-L

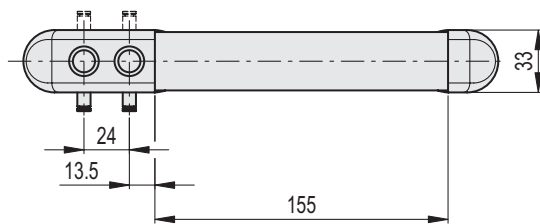
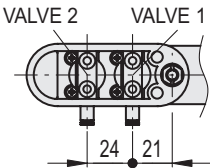
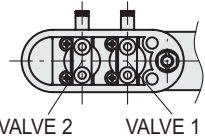
RH-FG18-P5-R

Code	Code	⚖
RHFG18-P5.L140.11	RHFG18-P5.R140.11	482



RH-FG18-P5-LL

RH-FG18-P5-RR



RH-FG18-P5-LL

RH-FG18-P5-RR

Code	Code	⚖
RHFG18-P5.LL140.11	RHFG18-P5.RR140.11	536