

- 1
- 2
- 3
- 4
- 5
- 6
- 7
- 8
- 9
- 10
- 11
- 12
- 13
- 14
- 15
- 16
- 17
- 18
- 19

**COVERING**

Mould-on polyurethane, hardness 92 Shore A.

**WHEEL CENTRE BODY**

Cast iron.

**STANDARD EXECUTIONS**

- **RBL**: hub directly made into the centre. The wheel hub is designed to be easily reprocessed to obtain a keyway or housing for clamping. Any further reprocesses on the wheel must be carried out with maximum working temperature up to 80°C, (recommended max limit temperature during normal use of the product) to prevent degradation of the polyurethane coating. Ideal solution for equipment with drive wheels.
- **RSL**: hub with ball bearings. Ideal solution for heavy loads and continuous moving.

**APPLICATIONS**

Excellent rolling resistance and elasticity features, high wear and tearing resistance.  
 For selection parameters see Technical data (on page 1295).  
 RE.F4 wheel are supplied also with bracket:  
 - RE.F4-H (see page 1258): wheels with steel sheet bracket to be used for medium-heavy loads.  
 - RE.F4-WH (see page 1260): wheels with electro-welded steel bracket to be used for heavy loads.  
 - RE.F4-WEH (see page 1262): wheel with electro-welded steel bracket to be used for extra-heavy loads.

**ENVIRONMENTAL CONDITIONS**

Suitable for use in environments with the presence of atmospheric agents, alcohols and glycols, use in environments with the presence of organic and mineral acids, basic solutions and saturated vapour is not recommended.

**ROLLING RESISTANCE - FORCE / LOAD APPLIED**

For each load and diameter, the table indicates the force (in N) needed to push or pull a single wheel at a constant speed of 4 km/h on smooth ground.  
 For manual handling of a 4-wheel trolley, it is recommended to choose diameters with values below 50 N; for frequent handling, choose values below 30 N.

**MECHANICAL MOVING WITH TOWING DEVICES**

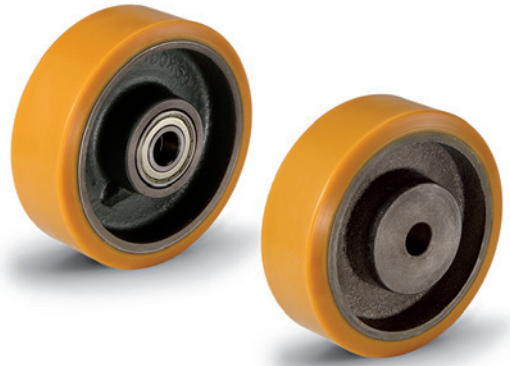
For mechanical towing, please see the technical specifications to determine the capacity variation.

**TEMPERATURE**

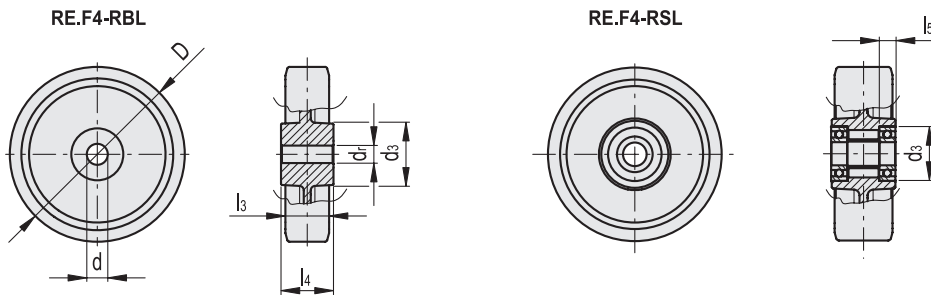
If operating temperatures in an application differ from the standard range of values, please see the technical specifications to determine the capacity variation.

**SPECIAL EXECUTIONS ON REQUEST**

Hole with keyway in compliance with UNI 6604, UNI 6607 e ISO 2941 (RBL version).



		Traction force or thrust for wheel movement [N]						
		Load [N]						
		1500	3000	4500	6000	10000	15000	20000
D [mm]	100	38	77	-	-	-	-	-
	125	33	65	110	-	-	-	-
	150x50	25	52	86	126	-	-	-
	150x80	18	35	60	105	180	-	-
	200x50	17	38	60	85	160	-	-
	200x80	13	35	50	67	115	170	-
	250	<10	25	45	60	103	155	-
	300	<10	15	35	50	86	130	160



**RE.F4-RBL**

Code	Description	D	dH7	d3	dr *	l3	l4	Static load# [N]	Dynamic carrying capacity# [N]	⚖️
451401	RE.F4-100-RBL	100	15	55	30	40	45	5000	3000	1500
451402	RE.F4-125-RBL	125	20	60	30	40	60	6000	4500	2085
451403	RE.F4-150-RBL	150	20	70	40	50	60	9100	7000	3700
451404	RE.F4-200-RBL	200	20	70	40	50	60	15000	9500	4600
451405	RE.F4-250-RBL	250	40	95	60	80	80	28000	16000	11000
451406	RE.F4-300-RBL	300	50	120	80	100	100	42000	25000	21200

**RE.F4-RSL**

Code	Description	D	d	d3	l3	l4	l5	Static load# [N]	Rolling resistance# [N]	Dynamic carrying capacity# [N]	⚖️
451411	RE.F4-100-RSL	100	15	35	38	40	11	5000	2200	3800	1020
451412	RE.F4-125-RSL	125	20	47	50	55	14	8000	2700	5500	1980
451413	RE.F4-150x50-RSL	150	20	47	50	55	14	9100	2900	7500	2500
451410	RE.F4-150x80-RSL	150	25	62	78	88	18	17000	4000	10000	5690
451414	RE.F4-200x50-RSL	200	20	47	50	55	14	15000	3800	10000	3650
451415	RE.F4-200x80-RSL	200	25	62	78	86	17	20000	4500	16000	7260
451416	RE.F4-250-RSL	250	25	62	78	86	17	28000	5000	19000	9810
451417	RE.F4-300-RSL	300	30	62	78	86	17	34000	6000	23000	13800

\* Max diameter permissible for hole to ensure the static load values reported.  
 # For static load, rolling resistance and dynamic carrying capacity see Technical data (on page ).