



MATERIAL

Glass-fibre reinforced polyamide based (PA) technopolymer, black colour, matte finish.

CLOSING CAP

Glass-fibre reinforced polyamide based (PA) technopolymer, light grey colour, press-fit assembly.

STANDARD EXECUTION

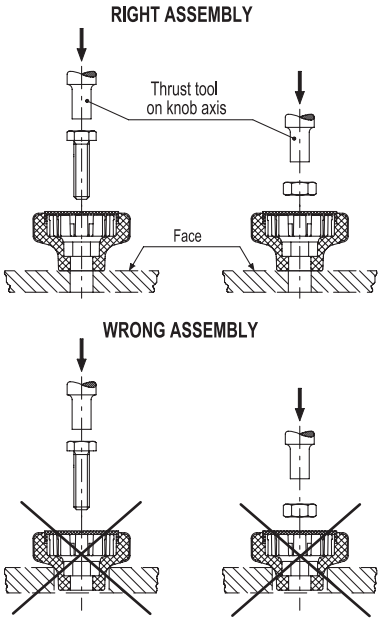
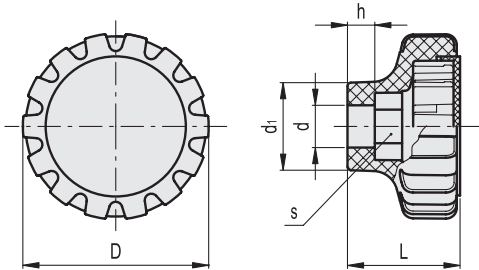
Assembly by means of hexagon head screws or standard lock nuts (not supplied) to put in place inside the knob by pressing.

SPECIAL EXECUTIONS ON REQUEST

- On the surface of the closing cap words, marks, graphic symbols, etc. can be tampoprinted in colours.
- Closing cap in other colours.

ASSEMBLY INSTRUCTIONS

1. The base of the knob should rest on a flat surface.
 2. Insert the screw or the lock nut into the knob hole by means of a thrust tool.
 3. Push until the insert is completely fitted in.
 4. Assemble the snap-in closing cap.
- The screw or nut assembly can be also made by fitting into the hexagon socket and screw-on the knob, until firmly in place.



Code	Description	D	d	L	d1	h	s	△
37951	MDA.30 EH-6	34	6	21	16	5	10	14
37956	MDA.40 EH-8	42	8	26	19	5	13	18
37961	MDA.50 EH-10	53	10	32	24	5	17	23