

**MATERIAL**

Zinc-plated steel, class 8.

**STANDARD EXECUTIONS**

- **DCE-WA-S**: for DCE-S (DIN 3015-1) standard series tube clamps.
- **DCE-WA-D**: for DCE-D (DIN 3015-3) double series tube clamps.

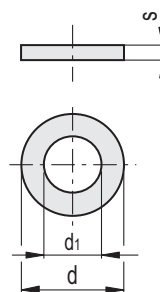
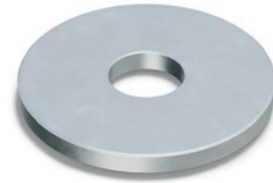
**FEATURES AND APPLICATIONS**

They are mainly used in combination with DCE-SRC and DCE-SRE screws for fastening half clamps.

**ACCESSORIES**

For the assembly kit DCK-S and DCK-D .

- DCE-S: standard series tube clamps.
- DCE-D: double series tube clamps.
- DCE-SRC: cylinder head screws.
- DCE-SRE: hexagon head screws.

**DCE-WA-S**

Code	Description	d	d1	s	Fastening with screws	△△
570201	DCE-WA-S-6.3-0.8-ZN	11	6.4	1.6	M 6	1

**DCE-WA-D**

Code	Description	d	d1	s	Fastening with screws	△△
570203	DCE-WA-D-6.5-2-ZN	22	6.5	2	M 6	6
570205	DCE-WA-D-8.5-2-ZN	22	8.5	2	M 8	6