

MATERIAL

Rotor, stator and knob in nickel-plated zinc alloy.

NUT

M19x1 in brass.

SPRING WASHER

Zinc-plated steel.

CLOSING LEVER

Zinc-plated steel, thickness 2.5 mm.

SCREW

M5x8 zinc-plated steel.

INTERNAL SPRING

Stainless steel.

ROTATION

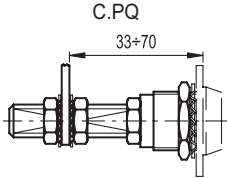
90°.

FEATURES AND APPLICATIONS

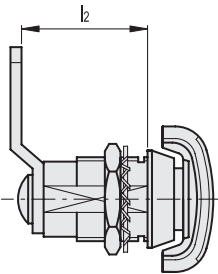
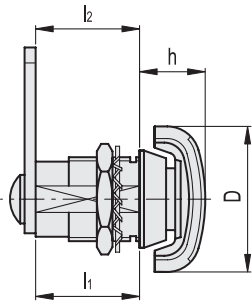
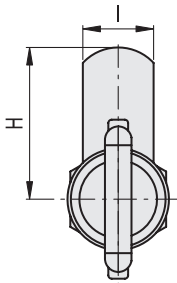
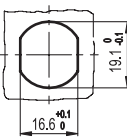
CM compression latches are particularly suitable for applications on cabinets or doors subject to strong vibrations. The lever rotation is only possible through the knob compression.

SPECIAL EXECUTIONS AND ACCESSORIES

- Closing levers in other dimensions.
- Brass threaded extension for prolonged positioning of the lever (code 421137 C.P.Q M5/58).



Drilling template



Code	Description	H	D	I	I1	I2	h	84
421211	CM.32-20	32	36	16	20	20	15	63
421213	CM.36-25	35.5	36	16	20	25	15	65