

MATERIAL

Acetal resin based (POM) technopolymer, black colour, matte finish.

ROTATING PIN

Acetal based (POM) technopolymer, black colour.

SCREW-COVERS

Polyester based (PBT) technopolymer, black colour, matte finish, snap-in assembly.

STANDARD EXECUTIONS

- **CFQ-SH**: pass-through holes for countersunk head screws.
- **CFQ-CH**: pass-through holes for cylindrical head screws.
- **CFQ-EH**: pass-through holes for hexagonal head screws.

ROTATION ANGLE (APPROXIMATE VALUE)

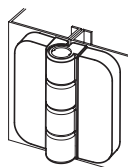
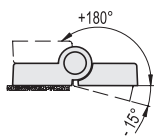
Max 195° (-15° and +180° being 0° the condition where the interconnected surfaces are on the same plane).

Do not exceed the rotation angle limit so as not to prejudice the hinge mechanical performance.

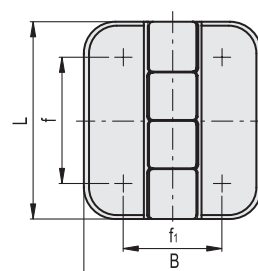
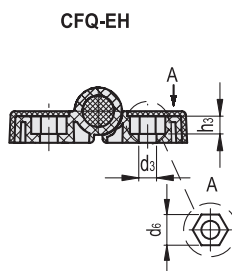
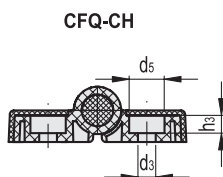
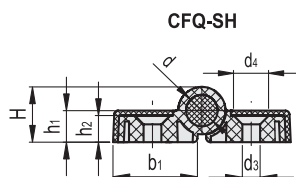
To choose the convenient type and the right number of hinges for your application, see the Guidelines (see page 1298).



FM design



Resistance tests					
AXIAL STRESS		RADIAL STRESS		90° ANGLED STRESS	
Maximum working load	Load at breakage	Maximum working load	Load at breakage	Maximum working load	Load at breakage
Ea [N]	Ra [N]	Er [N]	Rr [N]	E90 [N]	R90 [N]
300	1220	350	1970	290	720



Code	Description	L	B	f	f1	H	h1	h2	h3	b1	d	d3	d4	d5	d6	C# [Nm]	Δ
426331-C9	CFQ.50 SH-4-C9	50	45	32	25	14	8	7	-	21.5	8	4.5	8.5	-	-	1.5	17
426332-C9	CFQ.50 CH-4-C9	50	45	32	25	14	8	7	4.5	21.5	8	4.5	-	8.5	-	1.5	17
426333-C9	CFQ.50 EH-4-C9	50	45	32	25	14	8	7	4.5	21.5	8	4.5	-	-	7	1.5	17

Suggested tightening torque for assembly screws.