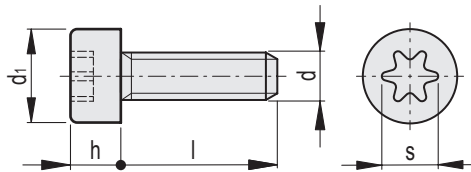
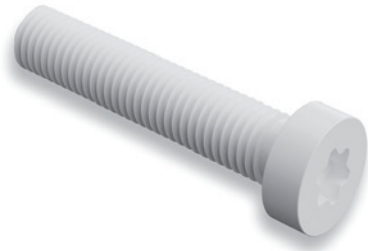


MATERIAL

Polyamide based (PA) technopolymer, natural colour.

FEATURES AND APPLICATIONS

The screw is similar in shape and size to that specified in DIN 34813. The Torx socket prevents the tool bit from slipping, avoiding the risk of damaging the screw during tightening and loosening. It is made entirely from insulating material that is resistant to corrosion and chemicals. It is suitable for applications in industry, aeronautics and electronics, and in all cases where weight reduction is required. The product is tested for mechanical and dimensional performance. Slight colour variations are perfectly normal and do not affect the quality of the product.



| Code | Description | d | d1 | l | s | h | Maximum tightening torque [Nm] | ⚖️ |
|--------|-------------------------|----|-----|----|----|-----|--------------------------------|-----|
| 504401 | SRD.34813-M4X10-TP-N-TX | M4 | 7 | 10 | 15 | 2.5 | 0.15 | 1 |
| 504402 | SRD.34813-M4X16-TP-N-TX | M4 | 7 | 16 | 15 | 2.5 | 0.15 | 1 |
| 504403 | SRD.34813-M4X20-TP-N-TX | M4 | 7 | 20 | 15 | 2.5 | 0.15 | 1 |
| 504404 | SRD.34813-M4X25-TP-N-TX | M4 | 7 | 25 | 15 | 2.5 | 0.15 | 1 |
| 504411 | SRD.34813-M5X16-TP-N-TX | M5 | 8.5 | 16 | 20 | 3.5 | 0.25 | 1 |
| 504412 | SRD.34813-M5X20-TP-N-TX | M5 | 8.5 | 20 | 20 | 3.5 | 0.25 | 1 |
| 504413 | SRD.34813-M5X25-TP-N-TX | M5 | 8.5 | 25 | 20 | 3.5 | 0.25 | 1.5 |
| 504414 | SRD.34813-M5X30-TP-N-TX | M5 | 8.5 | 30 | 20 | 3.5 | 0.25 | 1.5 |
| 504415 | SRD.34813-M5X40-TP-N-TX | M5 | 8.5 | 40 | 20 | 3.5 | 0.25 | 2 |
| 504416 | SRD.34813-M5X50-TP-N-TX | M5 | 8.5 | 50 | 20 | 3.5 | 0.25 | 2.5 |
| 504421 | SRD.34813-M6X16-TP-N-TX | M6 | 10 | 16 | 25 | 4 | 0.5 | 1 |
| 504422 | SRD.34813-M6X20-TP-N-TX | M6 | 10 | 20 | 25 | 4 | 0.5 | 1.5 |
| 504423 | SRD.34813-M6X25-TP-N-TX | M6 | 10 | 25 | 25 | 4 | 0.5 | 1.5 |
| 504424 | SRD.34813-M6X30-TP-N-TX | M6 | 10 | 30 | 25 | 4 | 0.5 | 2 |
| 504425 | SRD.34813-M6X40-TP-N-TX | M6 | 10 | 40 | 25 | 4 | 0.5 | 2.5 |
| 504426 | SRD.34813-M6X50-TP-N-TX | M6 | 10 | 50 | 25 | 4 | 0.5 | 3 |
| 504431 | SRD.34813-M8X20-TP-N-TX | M8 | 13 | 20 | 30 | 5 | 1.9 | 2 |
| 504432 | SRD.34813-M8X25-TP-N-TX | M8 | 13 | 25 | 30 | 5 | 1.9 | 2.5 |
| 504433 | SRD.34813-M8X30-TP-N-TX | M8 | 13 | 30 | 30 | 5 | 1.9 | 3 |
| 504434 | SRD.34813-M8X40-TP-N-TX | M8 | 13 | 40 | 30 | 5 | 1.9 | 2.5 |
| 504435 | SRD.34813-M8X50-TP-N-TX | M8 | 13 | 50 | 30 | 5 | 1.9 | 4.5 |

Standard machine parts