

- 1

MATERIAL

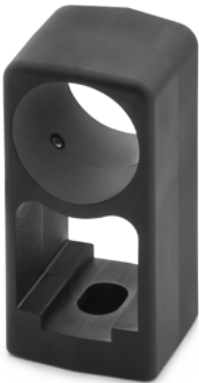
Glass-fibre reinforced polyamide based (PA) technopolymer, black colour, matte finish.
- 2

SCREW

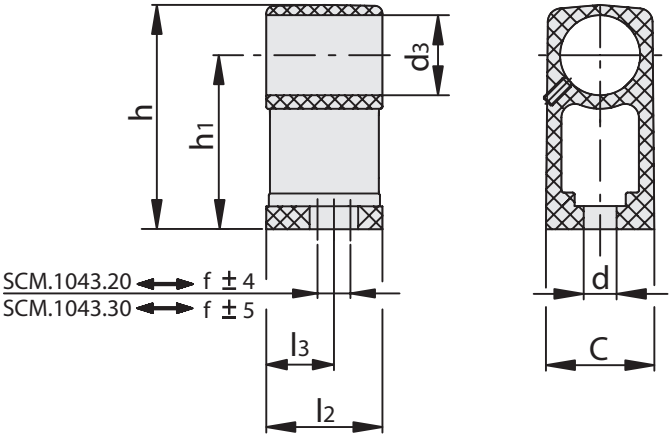
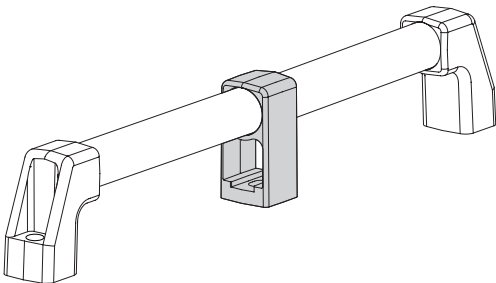
AISI 304 stainless steel.
- 3

FEATURES AND APPLICATIONS

Intermediate shank for tube Ø20 and for tube Ø30, suggested for tube longer than 700 mm.
- 4



ELESA Original design



Code	Description	f	d	h	h ₁	l ₂	l ₃	d ₃	C	For handle	
15306	SCM.1043-20	10	8.5	58	45	30	18	20	28	M.1043/20 - M.1043 BM/20	48
15305	SCM.1043-30	13	10.5	78	60	36	22	30	38	M.1043/30 - M.1043 BM/30	51