

**MATERIAL**

Round-section AISI 316L stainless steel, with ground, shot-blasted surfaces, electrolytically polished matte finish.

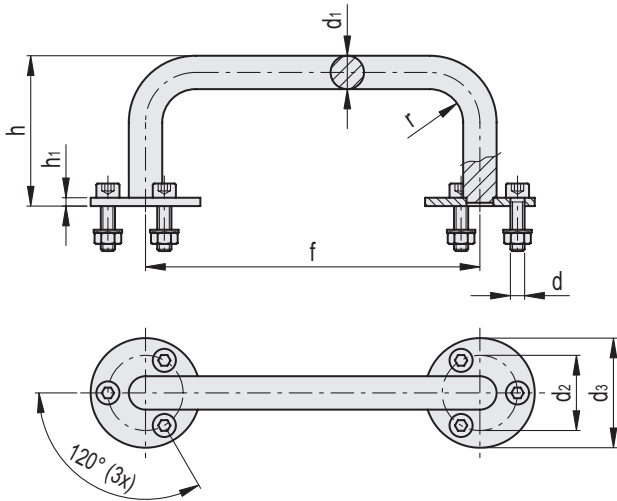
**FIXING PLATES**

AISI 316L stainless steel, with shot-blasted surfaces electrolytically obtained polished matte finish, fixed to the handle by means of welding.

Smooth pass-through holes for cylinder head screws with M8x35 hexagonal socket and AISI 316L stainless steel washers, included in the supply.

**SPECIAL EXECUTIONS ON REQUEST**

Handles with different lengths.



Code	f	d	d1	h	h1	d2	d3	r	⚖
RHEM-20.200.075.46	200	M8x35	20	75	5	45	65	20	950
RHEM-20.200.090.46	200	M8x35	20	90	5	45	65	20	1025
RHEM-25.300.090.46	300	M8x35	25	90	5	50	70	30	1860
RHEM-25.300.120.46	300	M8x35	25	120	5	50	70	30	2095