

**MATERIAL**

AISI 304 stainless steel.

**RIVETS**

AISI 304 stainless steel.

**SUPPORT BUSHINGS**

AISI 304 stainless steel.

**HANDLE**

Polyurethane, red colour.

**ANTI RELEASE LEVER**

AISI 304 stainless steel.

**SPRING**

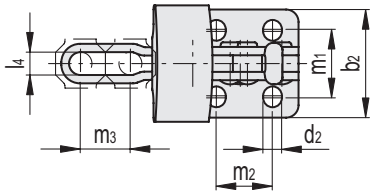
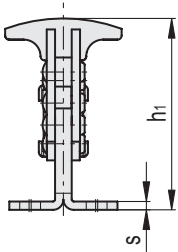
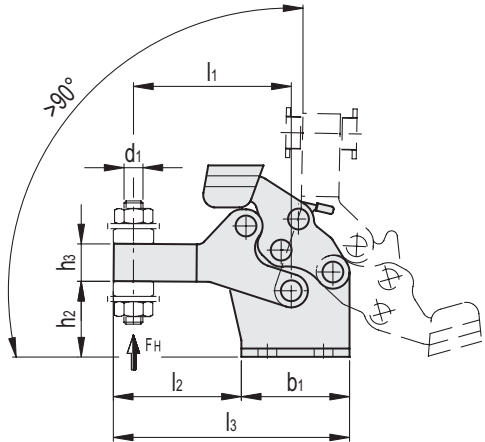
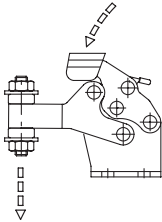
AISI 302 stainless steel.

**CLAMPING BOLT**

to be ordered separately

**FEATURES AND APPLICATIONS**

Anti-release lever to prevent accidental opening in the presence of strong vibrations. All articulated joints are lubricated with special grease. The ergonomic T-handle allows the lever to be opened using only two fingers. A special feature of MOD-S-SST toggle clamps is their low closure profile. During clamping, the lever is controlled to prevent impact on functioning due to side thrust. Supplied complete with two folded washers required for attaching clamping bolts (to be ordered separately). Slotted assembly holes for applications in inches.



Code	Description	b1	b2	d1	d2	h1	h2	h3	l1	l2	l3	l4	m1	m2	m3	s	FH* [N]	Δ
GG.DS302	MOD-S.80-MLX	26	26	M5	4.5	46	18	9	38	31	57	5.5	15.5+16.5	13.5	10	2	900	67
GG.DS306	MOD-S.140-MLX	44	44	M8	6.6	69	26	15	62.5	49	93	8.5	26+29.5	23	17	2.5	1300	218
GG.DS310	MOD-S.250-MLX	64	62	M10	8.7	96	34	20	89	67	131	10.5	37.5+38.5	35	24	3	1200	532

\* Holding force.