

**MATERIAL**

Polypropylene-based (PP) technopolymer, high UV resistance, RAL 9005 black colour.

**STANDARD EXECUTION**

One fastening hole for hexagon head screw

**WORKING TEMPERATURE**

From -30 °C to +90 °C.

**FEATURES AND APPLICATIONS**

The double series tube clamp, in compliance with standard DIN 3015-3, allows rigid pipes or flexible cables to be securely fastened in parallel, reducing vibrations and noise. In particular, the DIN regulation defines specific reference groups based on the overall dimensions of the collar bodies. The table shows the correspondence between the DIN 3015-3 group and the corresponding DCE-D group. The special internal knurling of the two half clamps enables a high level of grip between the clamp and the tube, thus ensuring high stability. They are used in industrial hydraulics as a fastening system for the construction of pipes (liquids or gases). In mobile hydraulics (material handling machine, agricultural vehicles) for the construction of hydraulic or pneumatic systems with flexible tubes or cables. They are also used in the rail and naval sectors. Tube clamps technical data.

**EXECUTIONS ON REQUEST**

- Clamps for tubes with different diameters.
- Various materials and colours.

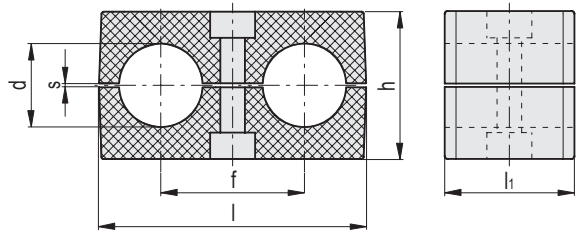
**ACCESSORIES**

- For the assembly kit DCK-D.
- DCE-PU: cover plates.
  - DCE-PL: welded lower plates.
  - DCE-SRE: hexagon head screws.
  - DCE-WA: flat washers.
  - DCE-GU: mounting guides.
  - DCE-NTG: nuts for mounting guides.



Correspondence between the DIN 3015-2 group and the DCE-H group

DIN 3015-2 group	1	2	3	4	5
DCE-H group	1	2	3	4	5



Code	Description	Group	d	d Tube [GAS]	f	l	l1	h	s	Fastening with screws Metric	Fastening with screws UNC	⚖
570381-C9	DCE-D-1-6-6-PP-C9	1	6	-	20	36	30	27	0.6	M 6	1/4-20	9
570383-C9	DCE-D-1-6.4-6.4-PP-C9	1	6.4	1/4	20	36	30	27	0.6	M 6	1/4-20	9
570385-C9	DCE-D-1-8-8-PP-C9	1	8	5/16	20	36	30	27	0.6	M 6	1/4-20	9
570387-C9	DCE-D-1-9.5-9.5-PP-C9	1	9.5	3/8	20	36	30	27	0.6	M 6	1/4-20	8
570389-C9	DCE-D-1-10-10-PP-C9	1	10	-	20	36	30	27	0.6	M 6	1/4-20	16
570391-C9	DCE-D-1-12-12-PP-C9	1	12	-	20	36	30	27	0.6	M 6	1/4-20	7
570393-C9	DCE-D-1-12.7-12.7-PP-C9	1	12.7	1/2	20	36	30	27	0.8	M 6	1/4-20	7
570401-C9	DCE-D-2-12-12-PP-C9	2	12	-	29	53	30	27	0.8	M 8	5/16-18	11
570403-C9	DCE-D-2-12.7-12.7-PP-C9	2	12.7	1/2	29	53	30	27	0.8	M 8	5/16-18	11
570405-C9	DCE-D-2-13.5-13.5-PP-C9	2	13.5	-	29	53	30	27	0.8	M 8	5/16-18	12
570407-C9	DCE-D-2-14-14-PP-C9	2	14	-	29	53	30	27	0.8	M 8	5/16-18	11
570409-C9	DCE-D-2-15-15-PP-C9	2	15	-	29	53	30	27	0.8	M 8	5/16-18	10
570411-C9	DCE-D-2-16-16-PP-C9	2	16	5/8	29	53	30	27	0.8	M 8	5/16-18	9
570413-C9	DCE-D-2-17.2-17.2-PP-C9	2	17.2	-	29	53	30	27	0.8	M 8	5/16-18	9
570415-C9	DCE-D-2-18-18-PP-C9	2	18	-	29	53	30	27	0.8	M 8	5/16-18	8
570421-C9	DCE-D-3-19-19-PP-C9	3	19	3/4	36	67	30	37	1	M 8	5/16-18	17
570423-C9	DCE-D-3-20-20-PP-C9	3	20	-	36	67	30	37	1	M 8	5/16-18	16
570425-C9	DCE-D-3-21.3-21.3-PP-C9	3	21.3	-	36	67	30	37	1	M 8	5/16-18	15
570427-C9	DCE-D-3-22-22-PP-C9	3	22	7/8	36	67	30	37	1	M 8	5/16-18	15
570429-C9	DCE-D-3-23-23-PP-C9	3	23	-	36	67	30	37	1	M 8	5/16-18	14
570431-C9	DCE-D-3-24-24-PP-C9	3	24	-	36	67	30	37	1	M 8	5/16-18	15
570433-C9	DCE-D-3-25-25-PP-C9	3	25	-	36	67	30	37	1	M 8	5/16-18	12
570435-C9	DCE-D-3-25.4-25.4-PP-C9	3	25.4	1	36	67	30	37	1	M 8	5/16-18	12
570441-C9	DCE-D-4-26.9-26.9-PP-C9	4	26.9	-	45	81	30	42	1	M 8	5/16-18	22
570443-C9	DCE-D-4-28-28-PP-C9	4	28	-	45	81	30	42	1	M 8	5/16-18	21
570445-C9	DCE-D-4-30-30-PP-C9	4	30	-	45	81	30	42	1	M 8	5/16-18	18
570451-C9	DCE-D-5-32-32-PP-C9	5	32	1 1/4	56	106	30	53	1.2	M 8	5/16-18	38
570453-C9	DCE-D-5-33.7-33.7-PP-C9	5	33.7	-	56	106	30	53	1.2	M 8	5/16-18	36
570455-C9	DCE-D-5-35-35-PP-C9	5	35	-	56	106	30	53	1.2	M 8	5/16-18	35
570457-C9	DCE-D-5-38-38-PP-C9	5	38	1 1/2	56	106	30	53	1.2	M 8	5/16-18	31
570459-C9	DCE-D-5-42.4-42.4-PP-C9	5	42.4	-	56	106	30	53	1.2	M 8	5/16-18	25