

- 1
- 2
- 3
- 4
- 5
- 6
- 7
- 8
- 9
- 10
- 11
- 12
- 13
- 14
- 15
- 16
- 17
- 18
- 19

Standard Maschinenelemente

**MATERIAL**

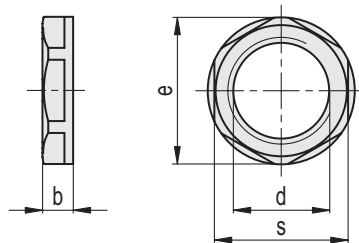
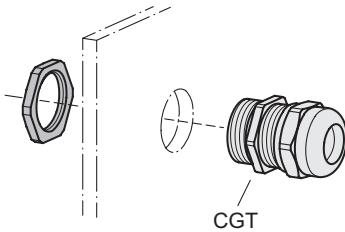
Glasfaserverstärkter Thermoplast (Polyamid PA), Grau RAL 7035 (C3) oder Schwarz RAL 9005 (C9).

**STANDARDAUSFÜHRUNGEN**

- **CGT-NTC**: metrische Gewinde.
- **CGT-NTC-PG**: PG-Gewinde.
- **CGT-NTC-NPT**: NPT-Gewinde.

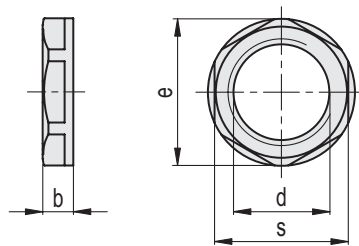
**FUNKTIONEN UND ANWENDUNGEN**

Sie dienen zur Befestigung einer CGT Kabelverschraubung in der Öffnung eines Verteilerkastens oder Anschlussdose, um eine mechanische Abdichtung zu gewährleisten. Sie können auch zur Befestigung von CGT-HR Reduzierungen oder CGT-TC Verschlusschrauben verwendet werden.



**CGT-NTC**

Code	Beschreibung	d	b	e ≈	s	⚖️
560101-C3	CGT-NTC-M12x1,5-C3	M 12 x 1.5	5	19.3	18	1
560101-C9	CGT-NTC-M12x1,5-C9	M 12 x 1.5	5	19.3	18	1
560103-C3	CGT-NTC-M16x1,5-C3	M 16 x 1.5	5	24.2	22	2
560103-C9	CGT-NTC-M16x1,5-C9	M 16 x 1.5	5	24.2	22	2
560105-C3	CGT-NTC-M20x1,5-C3	M 20 x 1.5	6	28.6	26	2
560105-C9	CGT-NTC-M20x1,5-C9	M 20 x 1.5	6	28.6	26	2
560107-C3	CGT-NTC-M25x1,5-C3	M 25 x 1.5	6	35	32	3
560107-C9	CGT-NTC-M25x1,5-C9	M 25 x 1.5	6	35	32	3
560109-C3	CGT-NTC-M32x1,5-C3	M 32 x 1.5	7	45.9	41	7
560109-C9	CGT-NTC-M32x1,5-C9	M 32 x 1.5	7	45.9	41	7
560111-C3	CGT-NTC-M40x1,5-C3	M 40 x 1.5	7	55.7	50	7
560111-C9	CGT-NTC-M40x1,5-C9	M 40 x 1.5	7	55.7	50	7
560113-C3	CGT-NTC-M50x1,5-C3	M 50 x 1.5	8	65.7	60	13
560113-C9	CGT-NTC-M50x1,5-C9	M 50 x 1.5	8	65.7	60	13
560115-C3	CGT-NTC-M63x1,5-C3	M 63 x 1.5	8	82.3	75	20
560115-C9	CGT-NTC-M63x1,5-C9	M 63 x 1.5	8	82.3	75	20



## CGT-NTC-PG

Code	Beschreibung	d	b	e ≈	s	⚖
560131-C3	CGT-NTC-PG7-C3	PG 7	5	20.9	19	1
560131-C9	CGT-NTC-PG7-C9	PG 7	5	20.9	19	1
560133-C3	CGT-NTC-PG9-C3	PG 9	5	24.1	22	2
560133-C9	CGT-NTC-PG9-C9	PG 9	5	24.1	22	2
560135-C3	CGT-NTC-PG11-C3	PG 11	5	26	24	2
560135-C9	CGT-NTC-PG11-C9	PG 11	5	26	24	2
560137-C3	CGT-NTC-PG13,5-C3	PG 13.5	6	29	27	3
560137-C9	CGT-NTC-PG13,5-C9	PG 13.5	6	29	27	3
560139-C3	CGT-NTC-PG16-C3	PG 16	6	33.2	30	3
560139-C9	CGT-NTC-PG16-C9	PG 16	6	33.2	30	3
560141-C3	CGT-NTC-PG21-C3	PG 21	7	39	36	5
560141-C9	CGT-NTC-PG21-C9	PG 21	7	39	36	5
560143-C3	CGT-NTC-PG29-C3	PG 29	7	50	46	7
560143-C9	CGT-NTC-PG29-C9	PG 29	7	50	46	7
560145-C3	CGT-NTC-PG36-C3	PG 36	8	66.1	60	15
560145-C9	CGT-NTC-PG36-C9	PG 36	8	66.1	60	15
560147-C3	CGT-NTC-PG42-C3	PG 42	8	73.3	65	16
560147-C9	CGT-NTC-PG42-C9	PG 42	8	73.3	65	16
560149-C3	CGT-NTC-PG48-C3	PG 48	8	78.5	70	17
560149-C9	CGT-NTC-PG48-C9	PG 48	8	78.5	70	17

## CGT-NTC-NPT

Code	Beschreibung	d	b	e ≈	s	⚖
560151-C3	CGT-NTC-3/8 NPT-C3	3/8 NPT	7	24.3	22	2
560151-C9	CGT-NTC-3/8 NPT-C9	3/8 NPT	7	24.3	22	2
560153-C3	CGT-NTC-1/2 NPT-C3	1/2 NPT	7	28.3	27	3
560153-C9	CGT-NTC-1/2 NPT-C9	1/2 NPT	7	28.3	27	3
560155-C3	CGT-NTC-3/4 NPT-C3	3/4 NPT	7	35.4	33	4
560155-C9	CGT-NTC-3/4 NPT-C9	3/4 NPT	7	35.4	33	4
560157-C3	CGT-NTC-1 NPT-C3	1 NPT	7	44.3	41	6
560157-C9	CGT-NTC-1 NPT-C9	1 NPT	7	44.3	41	6