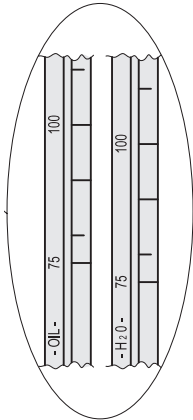


STANDARD EXECUTIONS

- **HFLT-EF**: assembly by means of a flange with 3 holes at 120° for 3 zinc-plated steel screws with hexagon socket, supplied, and a threaded coupler.
- **HFLT-ER**: assembly by means of a threaded coupler.

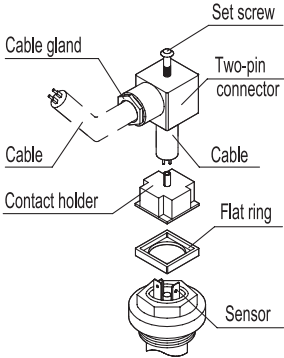
Electrical features	
Power supply	AC/DC
Electric contacts	NO (standard supply) NC (after specific configuration)
Maximum commutable voltage	230 Vdc, 230 Vac
Maximum current	2 A
Commutable power	40 W 40 VA
Cable gland	Pg 9 / Pg 11 UNIFIED
Conductors cross-section	Max. 1.5 mm <sup>2</sup>
Protection	IP 65



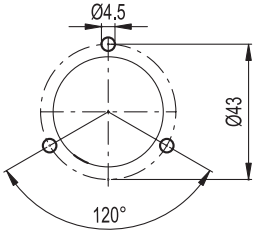
After selecting the scale corresponding to the liquid used, it is necessary to cut the rod at the point corresponding to the control level.

TWO-PIN CONNECTOR ASSEMBLY INSTRUCTIONS

1. Remove the connectors from the indicator by unscrewing the set screw placed in the bottom, take the contact holders out and loosen the cable glands.
2. Slip on the two-pole cable into the connectors (standard connectors) and connect the wires to the terminals nr. 1 and nr. 2 of the relative contact holders.
3. Assemble by pressing the contact holders into the relative connectors in the required position.
4. Screw the connectors to the indicator and then tighten the cable glands.

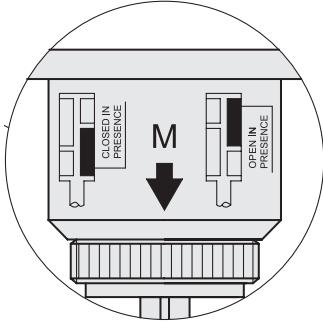


Drilling template for HFLT-EF



FUNCTIONING OF THE ELECTRICAL SENSOR

- HFLT-NO (standard condition of supply): the electrical contact opens when the liquid reaches the desired intervention level.
- HFLT-NC (condition after specific configuration): the electrical contact closes when the liquid reaches the desired intervention level.



The kind of operation required, with normally open (NO) or normally closed (NC) contact in presence of liquid, by loosening the fastening nut on the opposite end of the dipstick and positioning the inner magnet according to specific requirements (refer to the adhesive label) (see Fig.2).

HFLT-EF

Code	Description	d	B	Lmin	Lmax	d1	⚖
111276	HFLT-EF-3/4	G 3/4	50	75	250	23	110
111278	HFLT-EF-1	G 1	60	85	360	30	110

HFLT-ER

Code	Description	d	B	Lmin	Lmax	d1	⚖
111271	HFLT-ER-3/4	G 3/4	50	75	250	23	110
111273	HFLT-ER-1	G 1	60	85	360	30	110



Rapid levels with float

HFLT-E  
(GN 848)\*

\* (Produktcode gültig für Deutschland - Product series valid only for Germany)

Operating instructions on [www.elesa.com](http://www.elesa.com)



**ELESA S.p.A.**  
Via Pompei, 29  
20900 Monza (MB) Italy  
phone +39 039 28111  
[info@elesa.com](mailto:info@elesa.com)  
[www.elesa.com](http://www.elesa.com)