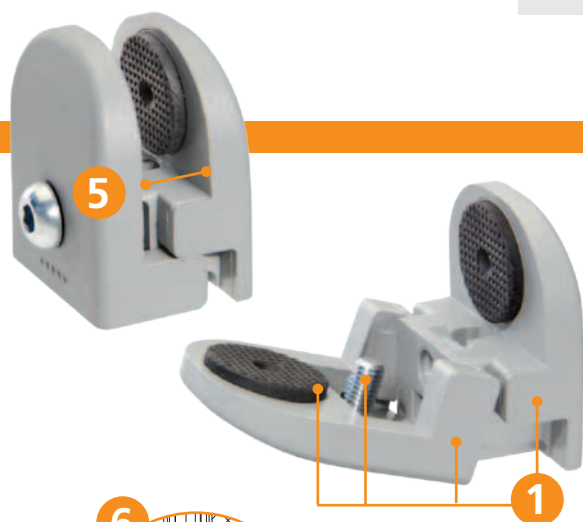
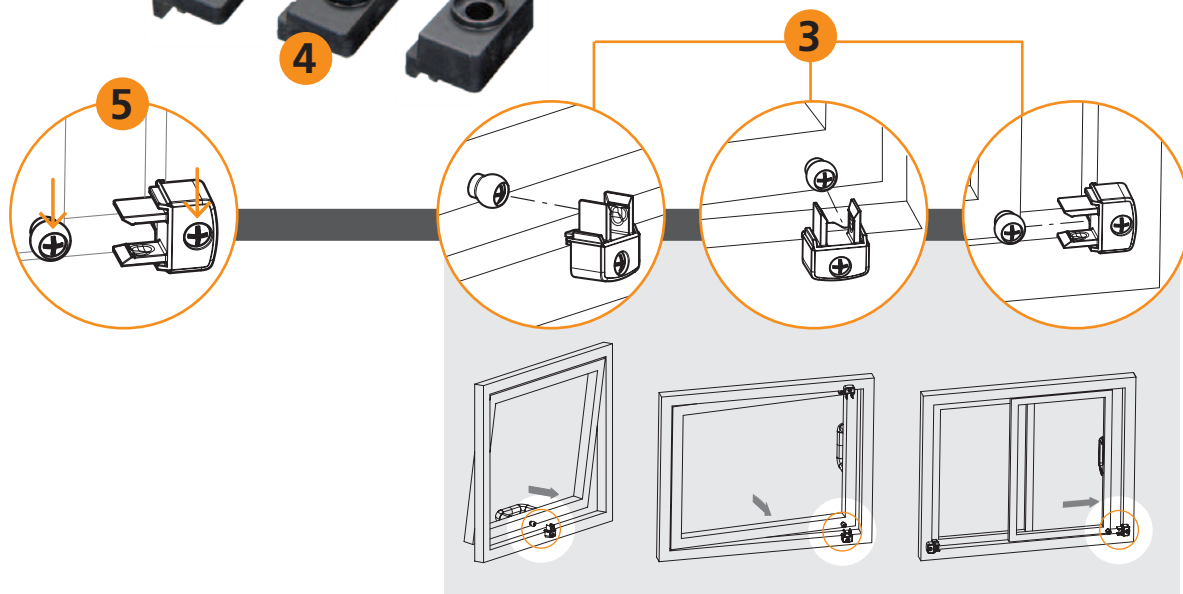




## BPS

### Ball-shaped door lock

1. anticorrosive materials
2. effective coupling: tested for more than 20.000 cycles
3. flexibility of positioning on different types of doors
4. spacers for adapting to the thickness differences between frame and door
5. easy assembly (two screws)
6. no need for lubrication



## PC

### Panel support clamp

1. retention of clamping elements in the open position, in compliance with CE standard
2. easy assembly by hexagonal key
3. elastomer overmoulded pads
4. no need for panel drilling
5. suitable for panels from 4 mm to 8 mm (nominal)
6. suitable for profiles with a width of 25 mm or higher

