

- 1
- 2
- 3
- 4
- 5
- 6
- 7
- 8
- 9
- 10
- 11
- 12
- 13
- 14
- 15

MATERIAL

Glass-fibre reinforced polyamide (PA) SUPER-technopolymer, matte finish, RAL 9005 (C9) black colour or RAL 7040 (C33) grey colour.

VIBRATION-DAMPING ELEMENTS

Made out of NBR rubber, hardness 90 Shore A, supplied assembled.

SCREW AND NUT

AISI 304 stainless steel countersunk head screw (UNI 5933) and M5 nut.

STANDARD EXECUTIONS

- **PPR**: for the mounting of panels, without vibration-damping elements.
- **PPR-A**: for the mounting of panels, with vibration-damping elements.
- **PPR-R**: for the mounting of electro-welded mesh (max thread diameter 3 mm), without vibration-damping elements.

FEATURES AND APPLICATIONS

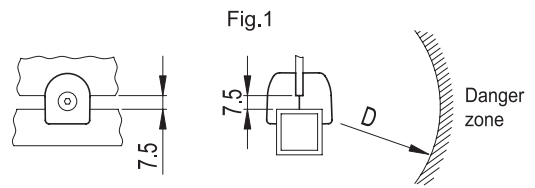
- Assembly on square-section profiles of 25 mm.
- Panel drilling is not required for mounting.
- Rubber vibration-damping elements to ensure perfect locking of the panel even if not perfectly in tolerance or in the presence of strong vibrations.
- The distance of 7.5mm of the panel with respect to the profile avoids areas of dirt accumulation.
- Safety in compliance with ISO 13857, paragraph 4.2.4.
- The safety distance (D) is the minimum required distance between the protection structure and the potentially dangerous element of the machine (Fig.1).

ASSEMBLY OF THE CLAMP ON THE PROFILE

Tighten the clamp against the profile and the panel or the electro-welded mesh using the screw and the nut included in the package.



ELESA Original design

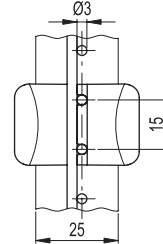
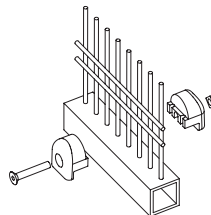
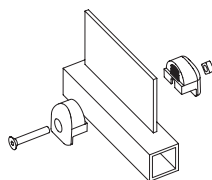
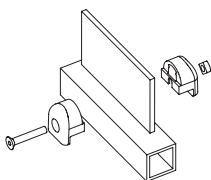


Safety in compliance with ISO 13857

PPR

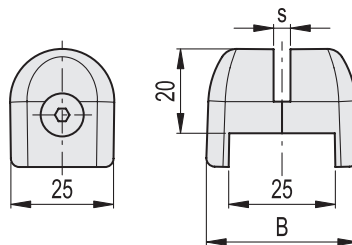
PPR-A

PPR-R



Panel drilling is not required

Conversion Table	
1 mm = 0.039 inch	
B	
mm	inch
36	1.40
37	1.44
38	1.48



C9 RAL9005
 C33 RAL7040

Code	Description	Code	Description	B	s	C# [Nm]	⚖️
49354-C9	PPR-4-C9	49354-C33	PPR-4-C33	36	4	2.5	23
49355-C9	PPR-5-C9	49355-C33	PPR-5-C33	37	5	2.5	24
49356-C9	PPR-6-C9	49356-C33	PPR-6-C33	38	6	2.5	25
49363-C9	PPR-A-3-C9	49363-C33	PPR-A-3-C33	36	2.5+3.4	2.5	23
49364-C9	PPR-A-4-C9	49364-C33	PPR-A-4-C33	37	3.5+4.4	2.5	24
49365-C9	PPR-A-5-C9	49365-C33	PPR-A-5-C33	38	4.5+5.4	2.5	25
49375-C9	PPR-R-5-C9	49375-C33	PPR-R-5-C33	37	5	2.5	25
49376-C9	PPR-R-6-C9	49376-C33	PPR-R-6-C33	38	6	2.5	26