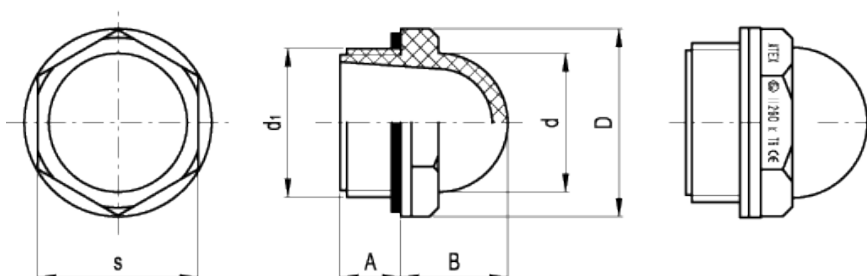


HCFE. ATEX

Oil circulation sights



Elesa Standards		Main dimensions						Tightening torque	Weight
Code	Description	d ₁	A	B	D	d	s	[Nm]	g
10851-EX	HCFE.12-3/8-EX	G 3/8	7.5	13	22.5	15	19	3÷5	4
10901-EX	HCFE.15-1/2-EX	G 1/2	10.5	16	26	19	22	4÷6	5
11001-EX	HCFE.20-3/4-EX	G 3/4	10.5	19.5	31.5	25	27	6÷8	8

Material

Transparent polyamide based (PA-T) technopolymer. Resistant to solvents, oils with additives, greases, acids and alkali. Avoid contact with alcohol or detergents containing alcohol.

Flat packing ring

NBR synthetic rubber.

ATEX directive compliance

The level indicators of HCFE. series comply with Health and Safety Requirements intended in 94/9/EC ATEX European Directive (explosive atmospheres) for equipments in Group II, category 2GD. Level indicators have "k" protection degree and can therefore be mounted in equipments protected by means of "immersion in liquid", without lowering protection degree.

II 2 G D k T6, marked on the HCFE. oil circulation sights, represents the identification according to the directive.

In details:

Ex: identification for explosion protection pursuant to ATEX directive 94/9/EC

II: equipment group II (places liable to be endangered by explosive atmospheres).

2: identification of the category

G: potentially explosive atmospheres through gases, vapors or mist

D: potentially explosive atmospheres through dust/air mixtures

k: protection degree by means of immersion in liquid

II B: Materials group (only for HCFE.20)

T6: temperature class

Ambient and/or fluid temperature: -30 ÷ +80 °C

Every product codes will be supplied with declaration of conformity to European Directives.

Accessories on request

Brass nut type [GH](#), for fitting to reservoirs with wall thickness smaller than 5 mm.

Technical data

An adequate tightening torque (see table below) is recommended when screwing the oil circulation sight, so as to guarantee optimal tightness without any deformation of the packing ring. Suggested tightening torque is the result of laboratory tests at ambient temperature (23°C) with sight, packing ring and reservoir walls perfectly cleaned.

Note

For use with fluids containing special additives, please contact ELESA Sales Department.



STANDARD MACHINE ELEMENTS WORLDWIDE

ELESA models all rights reserved in accordance with the law. Always mention the source when reproducing our drawings.